

## AccuBlot™ Anti-Mouse IgG Antibody (HRP)

<b>Catalog Number</b>	LDG0021YE
<b>Package</b>	100 µL / 1 mL / Customized package

For full product information, images and publications, please visit [our website](#).



### Overview

#### Description

Leadgene AccuBlot™ Anti-Mouse IgG Antibody (HRP) is conjugated with high-activity HRP. In coimmunoprecipitation (co-IP) assay, denatured IgG from IP samples may show interference and result in immunoblotting at ~55 kDa (heavy chain) and ~25 kDa (light chain) by using traditional secondary antibodies. The products of AccuBlot™ series are suitable for native IgG detection.

#### Product Note

Recommended dilution factor:

ELISA: 1:2500-10000

WB: 1:1000-3000

Note: Working dilution for specific application should be determined by the investigator to obtain the best conditions.

### Specifications

#### Host

Rat

#### Clonality

Monoclonal

#### Immunogen

Native mouse IgG

#### Reactivity

mouse

#### Application

ELISA, WB

#### Conjugation

HRP

#### Buffer

Phosphate Buffered Saline containing 1% BSA, 0.03% ProClin 300 and 50% glycerol, pH 7.4.

#### Specificity

IgG2b

#### Tainan Headquarter

+886-6-2536677

bd@leadgene.com.tw

#### Innovation & Research Center

+886-2-27065528

#### CLD Center

+886-6-2536677

**Form**

Liquid

**Instruction**
**Shipping**

The product is shipped with polar packs. Upon receipt, store it immediately at -20°C or lower for long term storage.

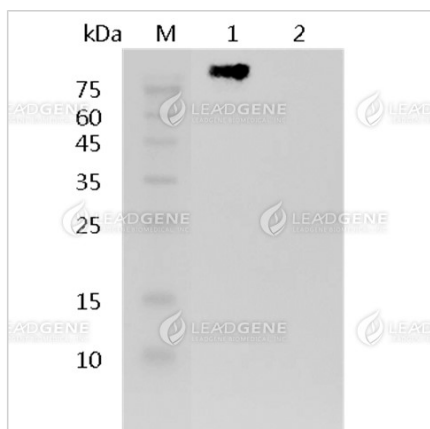
**Stability & Storage**

This product is stable after storage at:

- 2-8°C for 2 weeks under sterile conditions from date of receipt.
- -20°C or -80°C for 12 months under sterile conditions from date of receipt.


Avoid repeated freeze/thaw cycles and protect from light.

Suggestion: Divide antibody into several vials. Keep only vials for usage at 2-8°C.


**Image**



Western blot analysis of native mouse IgG (lane 1) and denatured mouse IgG (lane 2), using AccuBlot™ anti-Mouse IgG-HRP at a 1:5000 dilution.

**Disclaimer** : For Research Use or Further Manufacturing Only.

**Tainan Headquarter**
 +886-6-2536677

 bd@leadgene.com.tw

**Innovation & Research Center**
 +886-2-27065528

**CLD Center**
 +886-6-2536677