

AccuBlot™ Anti-Rabbit IgG (H+L) Antibody (HRP)

Catalog Number	LDG0015YE
Package	100 µL / 1 mL / Customized package

For full product information, images and publications, please visit [our website](#).



Overview

Description

Leadgene AccuBlot™ Anti-Rabbit IgG (H+L) Antibody (HRP) is conjugated with high-activity HRP. In coimmunoprecipitation (co-IP) assay, denatured IgG from IP samples may show interference and result in immunoblotting at ~55 kDa (heavy chain) and ~25 kDa (light chain) by using traditional secondary antibodies. The products of AccuBlot™ series are suitable for native IgG detection.

Product Note

Recommended dilution factor:

ELISA: 1:2500-10000

WB: 1:1000-3000

Note: Working dilution for specific application should be determined by the investigator to obtain the best conditions.

Specifications

Host

Mouse

Clonality

Monoclonal

Isotype

IgG2b

Immunogen

Purified rabbit IgG

Reactivity

Native rabbit IgG

Application

ELISA, WB

Conjugation

HRP

Buffer

Phosphate Buffered Saline containing 1% BSA, 0.03% Proclin300 and 50% glycerol, pH 7.4.

Tainan Headquarter

+886-6-2536677

bd@leadgene.com.tw

Innovation & Research Center

+886-2-27065528

CLD Center

+886-6-2536677

Specificity

IgG

Form

Liquid

Instruction**Shipping**

The product is shipped with polar packs. Upon receipt, store it immediately at -20°C or lower for long term storage.



Stability & Storage

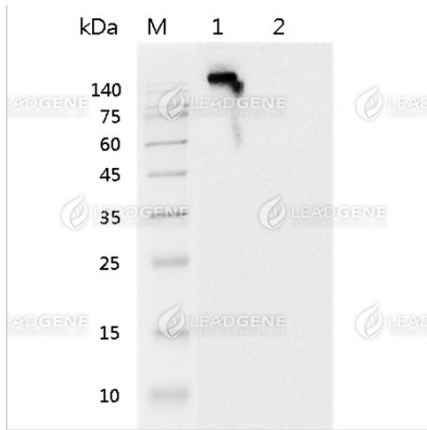
This product is stable after storage at:

- 2-8°C for 2 weeks under sterile conditions from date of receipt.
- -20°C or -80°C for 12 months under sterile conditions from date of receipt.

Avoid repeated freeze/thaw cycles and protect from light.

Suggestion: Divide antibody into several vials. Keep only vials for usage at 2-8°C.

Image**Tainan Headquarter** +886-6-2536677 bd@leadgene.com.tw**Innovation & Research Center** +886-2-27065528**CLD Center** +886-6-2536677



Western blot analysis of native rabbit IgG (lane 1) and denatured rabbit IgG (lane 2), using AccuBlot™ anti-Rabbit IgG-HRP at a 1:5000 dilution.

Disclaimer : For Research Use or Further Manufacturing Only.