

## Porcine Mycoplasma Hyopneumoniae Antigen Rapid Test (Uncut Sheet)

Catalog Number LDG0009LU

Package Sheet

For full product information, images and publications, please visit [our website](#).



### Overview

#### Description

Lateral flow for Mycoplasma hyopneumoniae p46 Protein detection.

### Specifications

#### Application

Lateral flow

#### Sensitivity

1 ng/mL

#### Assay Range

1-5 ng/mL

### Background

#### Background

Mycoplasma hyopneumoniae is the causative agent of swine enzootic pneumonia, a chronic respiratory disease in pigs. Its antigens are widely used in veterinary diagnostics and vaccine research to control infection and reduce economic losses in the swine industry.

### Instruction

#### Tainan Headquarter

+886-6-2536677

bd@leadgene.com.tw

#### Innovation & Research Center

+886-2-27065528

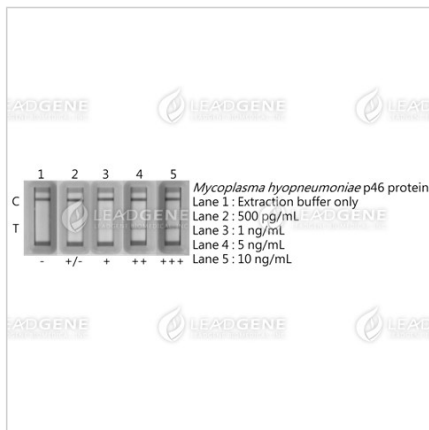
#### CLD Center

+886-6-2536677

### Shipping

The product is shipped in Room Temperature.

### Image



The sensitivity of the *Mycoplasma hyopneumoniae* Antigen Rapid Test (Uncut Sheet).

The LOD (Limit of Detection) for identifying *Mycoplasma hyopneumoniae* p46 protein is approximately 1 ng/mL.

**Disclaimer** : For Research Use or Further Manufacturing Only.