

## Leadgene® Precast Protein Gel (4-20%, 11-well)

Catalog Number LDG000500

Package 1 pack / 1 box

For full product information, images and publications, please visit [our website](#).



### Overview

#### Description

Gel type Bis-Tris gel  
Cassette size 10 x 10 cm  
Gel thickness 1 mm  
Compatibility Bio-Rad, Hoefer, CAVOY

#### Product Note

Addition: MOPS SDS Running Buffer, 2 Packs (for 2 L buffer preparation).  
Add 1 L of double-distilled water to 1 pack of MOPS SDS Running Buffer and homogenize by using a vortex mixer, which is used as working running buffer.  
Once prepared, the buffer should be stored at 2-8°C and must be used within one week.

### Instruction

#### Shipping

The product is shipped with polar packs. Upon receipt, store it immediately at 2-8°C for long term storage.

#### Stability & Storage

This product is stable after storage at:

- 2-8°C for unopened product.

Please refer to product manual for storage constructions, and do not freeze.

### Image

#### Tainan Headquarter

+886-6-2536677

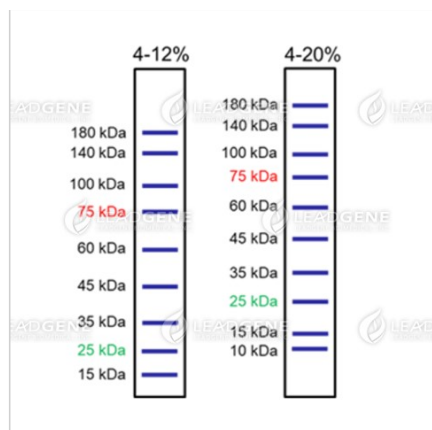
✉ [bd@leadgene.com.tw](mailto:bd@leadgene.com.tw)

#### Innovation & Research Center

+886-2-27065528

#### CLD Center

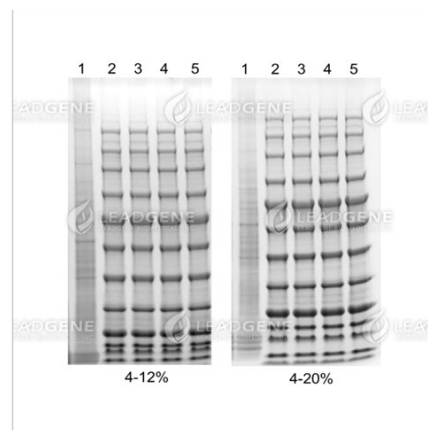
+886-6-2536677



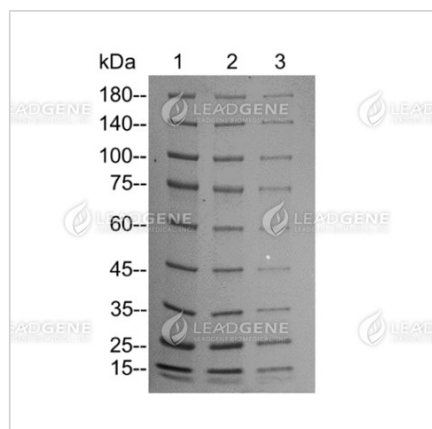
Leadgene® Precast Protein Gel  
migration charts

Catalog number	% Acrylamide	Wells	Well volume (μL)
00032	4-12%	11	30-50
00034	4-12%	15	15-30
00036	4-20%	11	30-50
00038	4-20%	15	15-30

Gel characteristics



Leadgene® Precast Protein Gel  
electrophoresis  
Lane 1: Cell lysates; Lane 2-5: protein  
marker



PVDF membrane transfer of  
Leadgene® Precast Protein Gel  
Lane 1, 2 and 3: protein marker (3, 2,  
1 μL)

**Disclaimer :** For Research Use or Further Manufacturing Only.