

## Porcine Mycoplasma Hyopneumoniae Antigen Rapid Test Kit (10 strips)

**Catalog Number** LDG0004LR

**Package** Box

For full product information, images and publications, please visit [our website](#).



### Overview

#### Description

Lateral flow for Mycoplasma hyopneumoniae p46 Protein detection.

#### Components

Item	Amount
Mycoplasma Hyopneumoniae Antigen Lateral Flow Device	10 strips
Prefilled Extraction Tube (400 µL Extraction Buffer/bottle)	10 bottles
Single-use Dropper	10 pcs
Single-use Sampling Swab	10 pcs
Instruction Manual	1

### Specifications

#### Application

Lateral flow

#### Sensitivity

Limit of detection (LoD):1 ng/mL

#### Assay Range

1-5 ng/mL

#### Tainan Headquarter

+886-6-2536677

bd@leadgene.com.tw

#### Innovation & Research Center

+886-2-27065528

#### CLD Center

+886-6-2536677

## Background

### Background

*Mycoplasma hyopneumoniae* is the causative agent of swine enzootic pneumonia, a chronic respiratory disease in pigs. Its antigens are widely used in veterinary diagnostics and vaccine research to control infection and reduce economic losses in the swine industry.

## Instruction

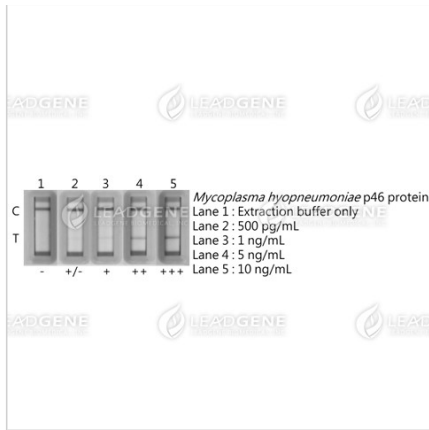
### Shipping

The product is shipped in Room Temperature.

### Stability & Storage

- Test kits should be stored at room temperature.
- Test cassettes must remain in sealed foil bags until use as they are sensitive to humidity.
- Test kits should not be reused.
- Do not use the kit if the package is damaged, or the physical appearance is altered.

## Image



The sensitivity of the Porcine  
*Mycoplasma Hyopneumoniae* Antigen  
 Rapid Test Kit.

The LOD (Limit of Detection) for  
 identifying *Mycoplasma*  
*hyopneumoniae* p46 protein is  
 approximately 1 ng/mL.

**Disclaimer :** For Research Use or Further Manufacturing Only.