

Anti-V5 Tag Antibody [Clone 7-1-8]

Catalog Number LDG0003YB

Package 100 µg / Customized package

For full product information, images and publications, please visit [our website](#).



Overview

Description

Mouse monoclonal anti-V5 antibody is an antibody specific to GKIPNPLLGLDST (V5) tags which can be applied to several immunoassays including ELISA, WB, IHC, and Flow cytometry.

This antibody has been identified in several sources (bacteria, yeast, and mammalian cells) of V5-fusion protein.

Product Note

Recommended dilution factor:

ELISA: 1:5000-20000

WB: 1:1000-5000

IP: 1:500-2000

IFA: 1:500-1000

FACS: 1:500-1000

Note: Working dilution for specific application should be determined by the investigator to obtain the best conditions.

Specifications

Host

Mouse

Clonality

Monoclonal

Isotype

IgG2b

Clone Name

clone 7-1-8

Immunogen

Peptide: GKIPNPLLGLDST (V5)

Application

ELISA, WB, IP, IFA, FACS

Tainan Headquarter

+886-6-2536677 +886-6-2531536

info@leadgene.com.tw

Taipei Office

+886-2-27065528

Conjugation

Unconjugated

Buffer

Phosphate Buffered Saline containing 0.03%
ProClin 300, pH 7.4.

Form

Liquid

Concentration

1 mg/mL

Specificity

Recognizes tag sequence of GKPIP NPLLGLDST on
either the N- or C-terminus of recombinant
fusion protein.

Instruction**Shipping**

The product is shipped with polar packs. Upon
receipt, store it immediately at -20°C or lower
for long term storage.

Stability & Storage

This product is stable after storage at:

- 2-8°C for 2 weeks under sterile conditions
from date of receipt.
- -20°C or -80°C for 12 months under sterile
conditions from date of receipt.

Avoid repeated freeze/thaw cycles.

Suggestion: Divide antibody into several vials.

Keep only vials for usage at 2-8°C.

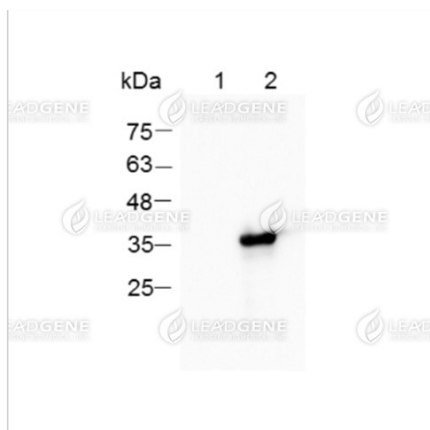
Image**Tainan Headquarter**

☎ +886-6-2536677 📠 +886-6-2531536

✉ info@leadgene.com.tw

Taipei Office

☎ +886-2-27065528



Western blotting analysis of anti-V5 tag mAb (1:5000)

Lane 1: 293T whole cell lysate-untransfected

Lane 2: 293T whole cell lysate-transfected

Lysate/proteins at 20 µg per lane

Disclaimer : For Research Use or Further Manufacturing Only.