

## Leadgene® Precast Protein Gel (4-12%, 11-well)

**Catalog Number** LDG000300

**Package** 1 pack / 1 box

For full product information, images and publications, please visit [our website](#).



### Overview

#### Description

Protein A is a membrane protein found in the cell wall of *Staphylococcus aureus*. Protein A contains four binding sites with a high affinity to human IgG, rabbit IgG and others and is therefore suitable for immunoprecipitation assay and purification of immunoglobulins.

Protein G is a surface protein found in the cell wall of *Streptococcal* bacteria. Protein G has a high affinity to human IgG, mouse IgG, and others and is, therefore, suitable for purifying and detecting immunoglobulins.

Protein A/G has broader binding ability than either Protein A or G alone. Protein A/G is a great tool for the purification and detection of all humans, rabbit, and mouse IgG subclasses, IgA, IgE, and IgM without interference from these other serum proteins.

#### Product Note

Addition: MOPS SDS Running Buffer, 2 Packs (for 2 L buffer preparation).

Add 1 L of double-distilled water to 1 pack of MOPS SDS Running Buffer and homogenize by using a vortex mixer, which is used as working running buffer.

Once prepared, the buffer should be stored at 2-8°C and must be used within one week.

### Instruction

#### Shipping

The product is shipped with polar packs. Upon receipt, store it immediately at 2-8°C for long term storage.

#### Stability & Storage

This product is stable after storage at:

- 2-8°C for unopened product.

Please refer to product manual for storage constructions, and do not freeze.

#### Tainan Headquarter

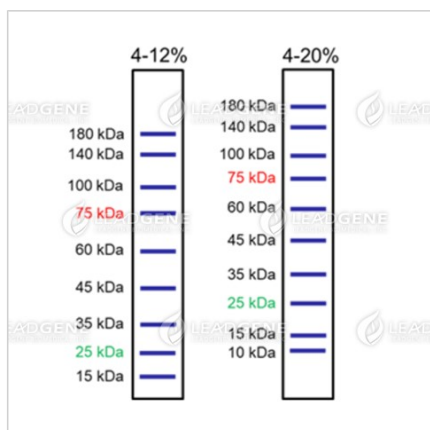
+886-6-2536677 +886-6-2531536

info@leadgene.com.tw

#### Taipei Office

+886-2-27065528

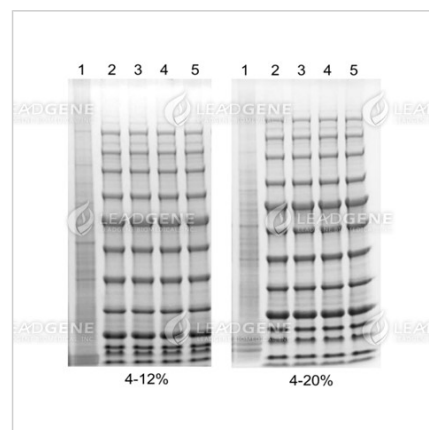
## Image



Leadgene® Precast Protein Gel migration charts

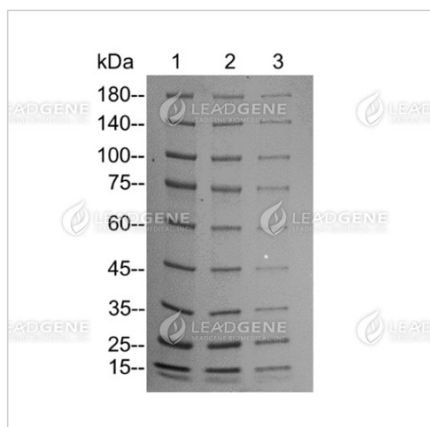
Catalog number	% Acrylamide	Wells	Well volume (μL)
00032	4-12%	11	30-50
00034	4-12%	15	15-30
00036	4-20%	11	30-50
00038	4-20%	15	15-30

Gel characteristics



Leadgene® Precast Protein Gel electrophoresis

Lane 1: Cell lysates; Lane 2-5: protein marker



PVDF membrane transfer of Leadgene® Precast Protein Gel  
Lane 1, 2 and 3: protein marker  
(3, 2, 1 μL)

**Disclaimer :** For Research Use or Further Manufacturing Only.