

Human Fibronectin, His Tag, E. coli

Catalog Number	LDG193PHE
Package	5 µg / 20 µg / 100 µg / 1 mg / Customized package

For full product information, images and publications, please visit [our website](#).



Specifications

Species of Origin

Human

Expression System

Escherichia coli

Affinity Tag

His Tag (C-term)

Storage Buffer

Lyophilized from a 0.2 µm filtered solution of 50 mM Tris, 150 mM NaCl, pH 8.0

Purity

>95% as determined by SDS-PAGE analysis.

Molecular weight

The protein has a calculated MW of 64 kDa.
The protein migrates as 60-65 kDa under reducing condition (SDS-PAGE analysis).

Activity

Measured by the ability of the immobilized protein to support the adhesion of B16-F1 mouse melanoma cells. The ED50 for this effect is <100 ng/mL.

Endotoxin Level

<0.1 EU per 1 µg of the protein by the LAL method.

Mycoplasma

Not detected

Form

Lyophilized

Background

Tainan Headquarters

+886-6-2536677

bd@leadgene.com.tw

Innovation & Research Center

+886-2-27065528

CLD Center

+886-6-2536677

Background

Fibronectin is a high-molecular-weight extracellular matrix glycoprotein involved in various cellular processes including adhesion, migration, growth, and differentiation. It plays crucial roles in wound healing, tissue repair, angiogenesis, and is implicated in cancer progression and fibrosis.

Uniprot ID

P02751-15

Synonyms

FN, FN1, CIG, FINC, FNZ, MSF, GFND, GFND2, LETS

Sequence Note

Pro1361 - Ser1637 & Ala1812 -Thr2107

Instruction

Reconstitution

It is recommended to reconstitute the lyophilized protein in sterile H₂O to a concentration of 200 µg/mL and incubate the stock solution for at least 20 min to ensure sufficient re-dissolved.

Stability & Storage

This product is stable after storage at:

- -20°C for 12 months in lyophilized state from date of receipt.
- -20°C or -80°C for 1 month under sterile conditions after reconstitution.

Avoid repeated freeze/thaw cycles.

Shipping

The product is shipped with polar packs. Upon receipt, store it immediately at -20°C or lower for long term storage.

Image

Tainan Headquarters

+886-6-2536677

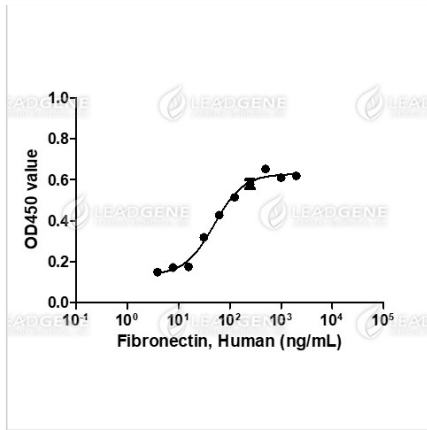
bd@leadgene.com.tw

Innovation & Research Center

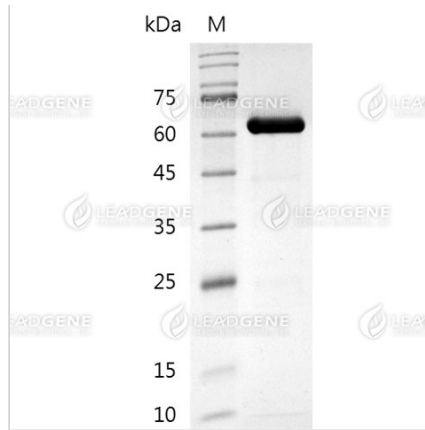
+886-2-27065528

CLD Center

+886-6-2536677



Activity analysis of recombinant Human Fibronectin, His Tag, E. coli. Measured by the ability of the immobilized protein to support the adhesion of B16-F1 mouse melanoma cells. The ED50 for this effect is <100 ng/mL.



SDS-PAGE analysis of recombinant human fibronectin protein.

Disclaimer : For Research Use or Further Manufacturing Only.