

Human Activin A, Tag Free, E. coli

Catalog Number LDG186PHE

Package 5 µg / 20 µg / 100 µg / Customized package

For full product information, images and publications, please visit [our website](#).



Specifications

Species of Origin

Human

Affinity Tag

Tag Free

Purity

>95% as determined by SDS-PAGE analysis.

Activity

Measure by its ability to inhibit the proliferation of mouse MPC-11 cells. The ED₅₀ for this effect is <10 ng/mL. The specific activity of recombinant human Activin A is approximately >1.0 x 10³ IU/mg.

Form

Lyophilized

Expression System

Escherichia coli

Storage Buffer

Lyophilized from a 0.2 µm filtered solution of PBS, pH 7.4.

Molecular weight

The protein has a calculated MW of 13.1 kDa. The protein migrates as 15 kDa under reducing condition (SDS-PAGE analysis).

Endotoxin Level

<0.1 EU per 1 µg of the protein by the LAL method.

Background

Tainan Headquarter

+886-6-2536677 +886-6-2531536

info@leadgene.com.tw

Taipei Office

+886-2-27065528

Background

Activin is the member of the TGF beta superfamily of cytokines. The current understanding of Activin A is classified as a hormone, a Growth Factors, and a cytokine. Depending on the different cell type, that overexpression of Activin A can either inhibit or promote cells division. There are important implications for tumor biology. Activin A also increase joint inflammation in rheumatoid arthritis (RA) and induces pathogenic mechanisms in the respiratory system.

Uniprot ID

#P08476

Synonyms

Inhibin beta A chain, Activin beta-A chain, Erythroid differentiation protein , EDF

Sequence Note

Gly311-Ser426

Instruction

Reconstitution

It is recommended to reconstitute the lyophilized protein in sterile H₂O to a concentration not less than 200 µg/mL and incubate the stock solution for at least 20 min to ensure sufficient re-dissolved.

Stability & Storage

This product is stable after storage at:

- -20°C for 12 months in lyophilized state from date of receipt.
- -20°C or -80°C for 1 month under sterile conditions after reconstitution.

Avoid repeated freeze/thaw cycles.

Shipping

The product is shipped with polar packs. Upon receipt, store it immediately at -20°C or lower for long term storage.

Image

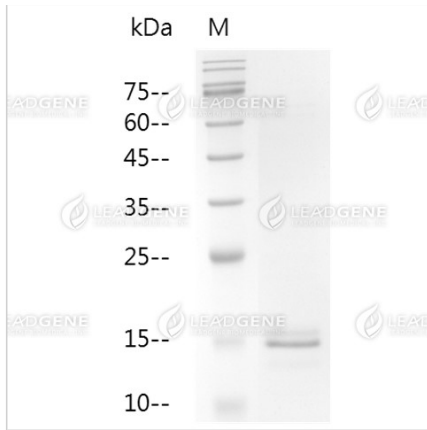
Tainan Headquarter

+886-6-2536677 +886-6-2531536

info@leadgene.com.tw

Taipei Office

+886-2-27065528



SDS-PAGE analysis of
recombinant human Activin A.

Disclaimer : For Research Use or Further Manufacturing Only.

Tainan Headquarter

+886-6-2536677 +886-6-2531536

info@leadgene.com.tw

Taipei Office

+886-2-27065528