

## Human F12, His-SUMO Tag, HEK293

<b>Catalog Number</b>	LDG183PHM
<b>Package</b>	5 µg / 20 µg / 100 µg / Customized package

For full product information, images and publications, please visit [our website](#).



### Specifications

#### Species of Origin

Human

#### Expression System

HEK293

#### Affinity Tag

His-SUMO Tag (N-term)

#### Storage Buffer

Lyophilized from a 0.2 µm filtered solution of PBS, pH 7.4.

#### Purity

>90% as determined by SDS-PAGE analysis.

#### Molecular weight

The protein has a calculated MW of 80.3 kDa. The protein migrates as 80-100 kDa under reducing condition (SDS-PAGE analysis).

#### Endotoxin Level

<0.1 EU per 1 µg of the protein by the LAL method.

#### Form

Lyophilized

### Background

#### Background

Coagulation Factor XII (F12), also known as Hageman factor, is a serine protease involved in the initiation of the intrinsic coagulation pathway. It is activated upon contact with negatively charged surfaces, triggering a cascade that leads to blood clot formation. F12 is also implicated in inflammation and thrombotic disorders.

#### Synonyms

Coagulation factor XII, Hageman factor, FXII, Plasma thromboplastin antecedent

**Uniprot ID**

P00748

**Sequence Note**

Met1-Ser615

**Instruction**
**Reconstitution**

It is recommended to reconstitute the lyophilized protein in sterile H<sub>2</sub>O to a concentration of 200 µg/mL and incubate the stock solution for at least 20 min to ensure sufficient re-dissolved.

**Stability & Storage**

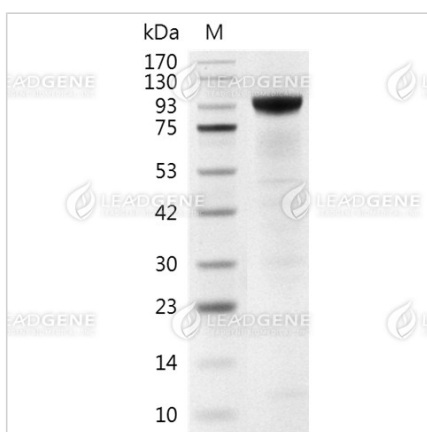
This product is stable after storage at:

- -20°C for 12 months in lyophilized state from date of receipt.
- -20°C or -80°C for 1 month under sterile conditions after reconstitution.

Avoid repeated freeze/thaw cycles.



**Shipping**

The product is shipped with polar packs. Upon receipt, store it immediately at -20°C or lower for long term storage.

**Image**


SDS-PAGE analysis of recombinant human F12 protein.

**Disclaimer :** For Research Use or Further Manufacturing Only.

**Tainan Headquarters** +886-6-2536677 [bd@leadgene.com.tw](mailto:bd@leadgene.com.tw)**Innovation & Research Center** +886-2-27065528**CLD Center** +886-6-2536677