

Human EGF, His Tag, E. coli

Catalog Number LDG183PHE

Package 5 µg / 20 µg / 100 µg / 1 mg / Customized package

For full product information, images and publications, please visit [our website](#).



Specifications

Species of Origin

Human

Expression System

Escherichia coli

Affinity Tag

His Tag (C-term)

Storage Buffer

Lyophilized from a 0.2 µm filtered solution of PBS, pH 8.0.

Purity

>95% as determined by SDS-PAGE analysis.

Molecular weight

The protein has a calculated MW of 7.16 kDa.
The protein migrates as 9-11 kDa under reducing condition (SDS-PAGE analysis).

Activity

Measure by its ability to induce 3T3 cells proliferation. The ED₅₀ for this effect is < 1.0 ng/mL. The specific activity of recombinant human EGF is approximately >1.0 x 10⁶ IU/mg.

Endotoxin Level

<0.1 EU per 1 µg of the protein by the LAL method.

Form

Lyophilized

Background

Tainan Headquarters

+886-6-2536677

bd@leadgene.com.tw

Innovation & Research Center

+886-2-27065528

CLD Center

+886-6-2536677

Background

Human epidermal Growth Factors (EGF) is a 6 kDa cytokine with 53 amino acid residues. EGF is mainly secreted from ectodermal cells, monocytes, kidney and duodenal glands. Upon binding to its receptor, EGFR, EGF acts to stimulate cell growth and proliferation of epithelial cells, play important roles in many developmental processes including accelerate tooth eruption, inhibits gastric acid secretion, and involve in wound healing.

Uniprot ID

#P01133

Synonyms

Epidermal Growth Factors, Urogastrone, URG

Sequence Note

Asn971-Arg1023

Instruction

Reconstitution

It is recommended to reconstitute the lyophilized protein in sterile H₂O to a concentration of 200 µg/mL and incubate the stock solution for at least 20 min to ensure sufficient re-dissolved.

Stability & Storage

This product is stable after storage at:

- -20°C for 12 months in lyophilized state from date of receipt.
- -20°C or -80°C for 1 month under sterile conditions after reconstitution.

Avoid repeated freeze/thaw cycles.

Shipping

The product is shipped with polar packs. Upon receipt, store it immediately at -20°C or lower for long term storage.

Image

Tainan Headquarters

+886-6-2536677

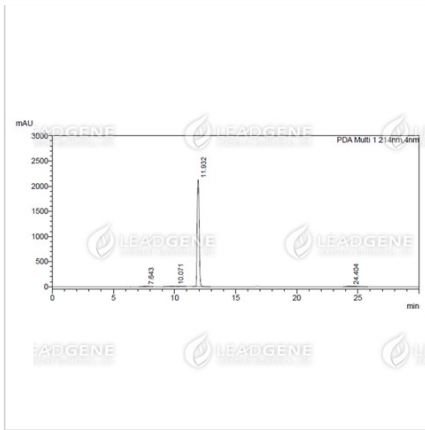
✉ bd@leadgene.com.tw

Innovation & Research Center

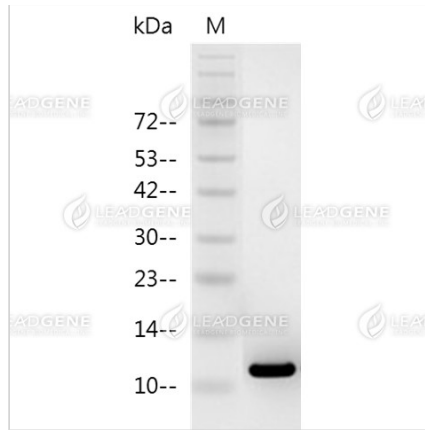
+886-2-27065528

CLD Center

+886-6-2536677



The purity of recombinant human EGF is greater than 95% as determined by SEC-HPLC.



SDS-PAGE analysis of recombinant human EGF.

Disclaimer : For Research Use or Further Manufacturing Only.