

## Human MTM1, His Tag, E. coli

<b>Catalog Number</b>	LDG181PHE
<b>Package</b>	5 µg / 20 µg / 100 µg / Customized package

For full product information, images and publications, please visit [our website](#).



### Specifications

#### Species of Origin

Human

#### Affinity Tag

His Tag (N-term)

#### Purity

>95% as determined by SDS-PAGE analysis.

#### Endotoxin Level

<1.0 EU per 1 µg of the protein by the LAL method.

#### Expression System

Escherichia coli

#### Storage Buffer

Lyophilized from a 0.2 µm filtered solution of PBS, pH 7.4.

#### Molecular weight

The protein has a calculated MW of 70.75 kDa.  
The protein migrates as 60 kDa under reducing condition (SDS-PAGE analysis).

#### Form

Lyophilized

### Background

#### Tainan Headquarters

+886-6-2536677

bd@leadgene.com.tw

#### Innovation & Research Center

+886-2-27065528

#### CLD Center

+886-6-2536677

### Background

Myotubularin is a protein that plays a crucial role in cellular processes and is primarily associated with a rare genetic disorder called myotubular myopathy (MTM). This disorder primarily affects skeletal muscles and is characterized by severe muscle weakness and impaired motor function.

Myotubularin is an enzyme that regulates the levels of a lipid molecule called phosphatidylinositol 3-phosphate (PI3P) within cells. PI3P is involved in various cellular functions, including membrane trafficking and signaling pathways. Mutations in the gene encoding myotubularin lead to a deficiency or loss of its enzymatic activity, disrupting PI3P metabolism and causing the development of MTM.

### Uniprot ID

#Q13496

### Synonyms

Phosphatidylinositol-3,5-bisphosphate 3-phosphatase,  
Phosphatidylinositol-3-phosphate phosphatase, CG2

### Sequence Note

Met1-Phe603

## Instruction

### Reconstitution

It is recommended to reconstitute the lyophilized protein in sterile H<sub>2</sub>O to a concentration of 200 µg/mL and incubate the stock solution for at least 20 min to ensure sufficient re-dissolved.

### Stability & Storage

This product is stable after storage at:

- -20°C for 12 months in lyophilized state from date of receipt.
- -20°C or -80°C for 1 month under sterile conditions after reconstitution.

Avoid repeated freeze/thaw cycles.

### Shipping

The product is shipped with polar packs. Upon receipt, store it immediately at -20°C or lower for long term storage.

### Tainan Headquarters

+886-6-2536677

bd@leadgene.com.tw

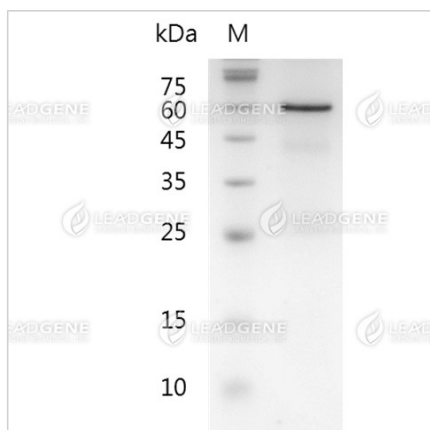
### Innovation & Research Center

+886-2-27065528

### CLD Center

+886-6-2536677

## Image



SDS-PAGE analysis of recombinant human MTM1.

**Disclaimer :** For Research Use or Further Manufacturing Only.