

## Human NF-L, His-SUMO Tag, E. coli

<b>Catalog Number</b>	LDG179PHE
<b>Package</b>	20 µg / 100 µg / Customized package

For full product information, images and publications, please visit [our website](#).



### Specifications

#### Species of Origin

Human

#### Expression System

Escherichia coli

#### Affinity Tag

His-SUMO Tag (N-term)

#### Storage Buffer

Lyophilized from a 0.2 µm filtered solution of PBS, pH 7.4.

#### Purity

>95% as determined by SDS-PAGE analysis.

#### Molecular weight

The protein has a calculated MW of 73.91 kDa. The protein migrates as 75 kDa under reducing condition (SDS-PAGE analysis).

#### Endotoxin Level

<0.1 EU per 1 µg of the protein by the LAL method.

#### Form

Lyophilized

### Background

#### Tainan Headquarters

+886-6-2536677

bd@leadgene.com.tw

#### Innovation & Research Center

+886-2-27065528

#### CLD Center

+886-6-2536677

### Background

Neurofilaments (NF) are assembled as heteropolymers, found exclusively in neurons, and serve as axonal scaffolding. They are composed of three subunits, including NF-L (68 kDa), NF-M (95 kDa), and NF-H (115 kDa), that are essential for axonal growth and maintenance. Elevated NF-L levels in serum and CSF (cerebrospinal fluid) have been correlated with axonal damage in Multiple Sclerosis patients, serving as a prognostic marker. In addition, plasma NF-L concentrations were highly significantly higher in patients with Alzheimer's disease.

### Uniprot ID

# P07196

### Synonyms

68 kDa neurofilament protein, Neurofilament triplet L protein

### Sequence Note

Ser2-Asp543

## Instruction

### Reconstitution

It is recommended to reconstitute the lyophilized protein in sterile H<sub>2</sub>O to a concentration of 200 µg/mL and incubate the stock solution for at least 20 min to ensure sufficient re-dissolved.

### Stability & Storage

This product is stable after storage at:

- -20°C for 12 months in lyophilized state from date of receipt.
- -20°C or -80°C for 1 month under sterile conditions after reconstitution.

Avoid repeated freeze/thaw cycles.

### Shipping

The product is shipped with polar packs. Upon receipt, store it immediately at -20°C or lower for long term storage.

## Image

### Tainan Headquarters

+886-6-2536677

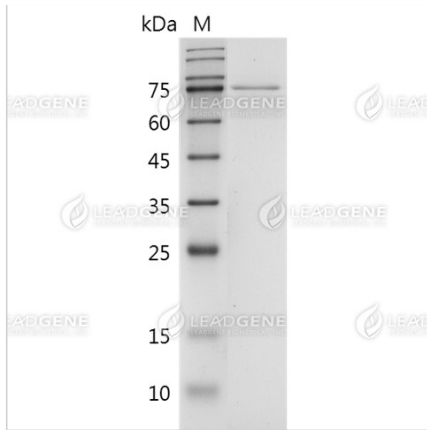
bd@leadgene.com.tw

### Innovation & Research Center

+886-2-27065528

### CLD Center

+886-6-2536677



SDS-PAGE analysis of recombinant human NF-L.

**Disclaimer :** For Research Use or Further Manufacturing Only.