

Human LIF, His Tag, E. coli

Catalog Number	LDG167PHE
Package	5 µg / 20 µg / 100 µg / Customized package

For full product information, images and publications, please visit [our website](#).



Specifications

Species of Origin

Human

Affinity Tag

His Tag (N-term)

Purity

>98% as determined by SDS-PAGE analysis.

Activity

Measure by its ability to induce TF-1 cells proliferation. The ED₅₀ for this effect is <0.2 ng/mL.

Form

Lyophilized

Expression System

Escherichia coli

Storage Buffer

Lyophilized from a 0.2 µm filtered solution of PBS containing 500 mM NaCl, pH 7.4.

Molecular weight

The protein has a calculated MW of 20.52 kDa. The protein migrates as 18 kDa under reducing condition (SDS-PAGE analysis).

Endotoxin Level

<0.1 EU per 1 µg of the protein by the LAL method.

Background

Tainan Headquarters

+886-6-2536677

bd@leadgene.com.tw

Innovation & Research Center

+886-2-27065528

CLD Center

+886-6-2536677

Background

Leukemia inhibitory factor (LIF) is a pleiotropic glycoprotein, belonging to the IL-6 receptor family. LIF is a 19.7 kDa protein containing 202 amino acid which high expression in human liver, bone, uterus, kidney and the central nervous system. LIF is an inducer of differentiation in M1 leukemia cells, osteoblasts and glia. Not only stimulates proliferation of DA1 cells inhibits proliferation of corticotrophs and promote cell survival in some cell types but also induce apoptosis in others.

Uniprot ID

P15018 1

Synonyms

Differentiation-stimulating factor, D factor, Melanoma-derived LPL inhibitor, MLPLI, Leukemia inhibitory factor

Sequence Note

Ser23-Phe202

Instruction

Reconstitution

It is recommended to reconstitute the lyophilized protein in sterile H₂O to a concentration not less than 200 µg/mL and incubate the stock solution for at least 20 min to ensure sufficient re-dissolved.

Stability & Storage

This product is stable after storage at:

- -20°C for 12 months in lyophilized state from date of receipt.
- -20°C or -80°C for 1 month under sterile conditions after reconstitution.

Avoid repeated freeze/thaw cycles.

Shipping

The product is shipped with polar packs. Upon receipt, store it immediately at -20°C or lower for long term storage.

Image

Tainan Headquarters

+886-6-2536677

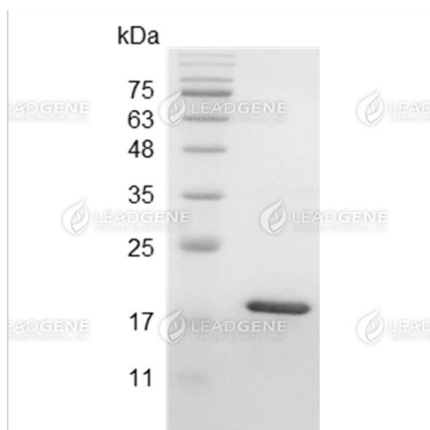
✉ bd@leadgene.com.tw

Innovation & Research Center

+886-2-27065528

CLD Center

+886-6-2536677



SDS-PAGE analysis of recombinant human LIF.

Disclaimer : For Research Use or Further Manufacturing Only.