

## Human CCL4, Tag Free, E. coli

**Catalog Number** LDG166PHE

**Package** 5 µg / 20 µg / 100 µg / Customized package

For full product information, images and publications, please visit [our website](#).



### Specifications

#### Species of Origin

Human

#### Affinity Tag

Tag Free

#### Purity

>98% as determined by SDS-PAGE analysis.

#### Activity

Measure by its ability to chemoattract BaF3 cells transfected with human CCR5. The ED<sub>50</sub> for this effect is <10 ng/mL.

#### Form

Lyophilized

#### Expression System

Escherichia coli

#### Storage Buffer

Lyophilized from a 0.2 µm filtered solution containing 50 mM Tris and 150 mM NaCl, pH 8.5.

#### Molecular weight

The protein has a calculated MW of 7.75 kDa. The protein migrates as 11 kDa under reducing condition (SDS-PAGE analysis).

#### Endotoxin Level

<0.1 EU per 1 µg of the protein by the LAL method.

### Background

#### Tainan Headquarter

+886-6-2536677 +886-6-2531536

info@leadgene.com.tw

#### Taipei Office

+886-2-27065528

### Background

C-C Motif Chemokine Ligand 4 (CCL4) is a 7.66 kDa cytokine with 69 amino acid residues. CCL4, also named macrophage inflammatory protein-1 $\beta$  (MIP-1 $\beta$ ), is mainly secreted from neutrophils, monocytes, B cells, T cells, fibroblasts, endothelial cells and epithelial cells. CCL4 recruits various immune cells like natural killer cells, monocytes, and neutrophils when CCL4 binds to CCR5. In addition, CCL4 mediates lymphocyte adhesion by Rac1 /Cdc42 signaling pathway and plays critical roles in different biological functions like maintenance of cell polarity, regulation of calcium ion transport and response to viruses.

### Uniprot ID

#P13236

### Synonyms

Lymphocyte activation gene 1 protein, LAG-1, Macrophage inflammatory protein 1-beta, MIP-1-beta, Monocyte adherence-induced protein 5-alpha, Small-inducible cytokine A4-like, C-C motif chemokine 4-like

### Sequence Note

Ala24-Asn92

## Instruction

### Reconstitution

It is recommended to reconstitute the lyophilized protein in sterile H<sub>2</sub>O to a concentration not less than 200  $\mu$ g/mL and incubate the stock solution for at least 20 min to ensure sufficient re-dissolved.

### Stability & Storage

This product is stable after storage at:

- -20°C for 12 months in lyophilized state from date of receipt.
- -20°C or -80°C for 1 month under sterile conditions after reconstitution.

Avoid repeated freeze/thaw cycles.

### Shipping

The product is shipped with polar packs. Upon receipt, store it immediately at -20°C or lower for long term storage.

### Tainan Headquarter

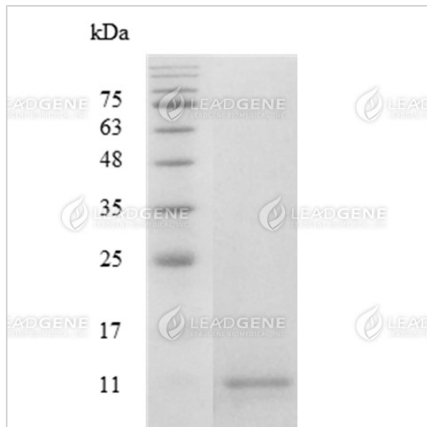
+886-6-2536677 +886-6-2531536

info@leadgene.com.tw

### Taipei Office

+886-2-27065528

## Image



SDS-PAGE analysis of  
recombinant human CCL4.

**Disclaimer :** For Research Use or Further Manufacturing Only.

### Tainan Headquarter

+886-6-2536677 +886-6-2531536

info@leadgene.com.tw

### Taipei Office

+886-2-27065528