

Human CCL2, His Tag, E. coli

Catalog Number	LDG164PHE
Package	5 µg / 20 µg / 100 µg / Customized package

For full product information, images and publications, please visit [our website](#).



Specifications

Species of Origin

Human

Affinity Tag

His Tag (N-term)

Purity

>95% as determined by SDS-PAGE analysis.

Activity

Measure by its ability to chemoattract BaF3 cells transfected with human CCR2A. The ED₅₀ for this effect is <20 ng/mL.

Form

Lyophilized

Expression System

Escherichia coli

Storage Buffer

Lyophilized from a 0.2 µm filtered solution of PBS, pH 7.4.

Molecular weight

The protein has a calculated MW of 9.49 kDa. The protein migrates as 11 kDa under reducing condition (SDS-PAGE analysis).

Endotoxin Level

<0.1 EU per 1 µg of the protein by the LAL method.

Background

Tainan Headquarters

+886-6-2536677

bd@leadgene.com.tw

Innovation & Research Center

+886-2-27065528

CLD Center

+886-6-2536677

Background

C-C Motif Chemokine Ligand 2 (CCL2) is an 8.44 kDa cytokine with 76 amino acid residues and is also known as monocyte chemoattractant protein 1 (MCP1). The CCL2 secreted from monocytes, macrophages, and dendritic cells. Upon binding with CCR4, it regulates many biological functions, such as recruitments of monocytes, memory T cells, and dendritic cells, response to TNF- α and Interferon- γ , angiogenesis, cellular homeostasis, and cytoskeleton organization.

Uniprot ID

P13500 1

Synonyms

Monocyte chemoattractant protein 1, Monocyte chemotactic and activating factor, MCAF, Monocyte chemotactic protein 1, MCP-1, Monocyte secretory protein JE, Small-inducible cytokine A2, C-C motif chemokine 2

Sequence Note

Gln24-Thr99

Instruction

Reconstitution

It is recommended to reconstitute the lyophilized protein in sterile H₂O to a concentration not less than 200 μ g/mL and incubate the stock solution for at least 20 min to ensure sufficient re-dissolved.

Stability & Storage

This product is stable after storage at:

- -20°C for 12 months in lyophilized state from date of receipt.
- -20°C or -80°C for 1 month under sterile conditions after reconstitution.

Avoid repeated freeze/thaw cycles.

Shipping

The product is shipped with polar packs. Upon receipt, store it immediately at -20°C or lower for long term storage.

Image

Tainan Headquarters

+886-6-2536677

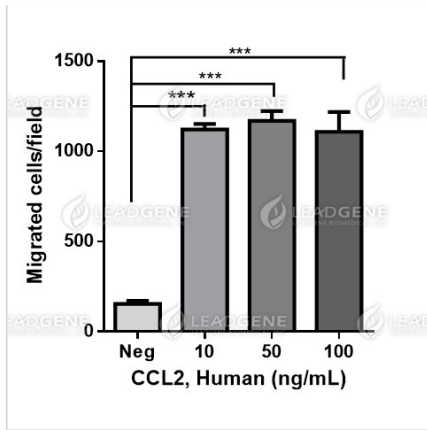
bd@leadgene.com.tw

Innovation & Research Center

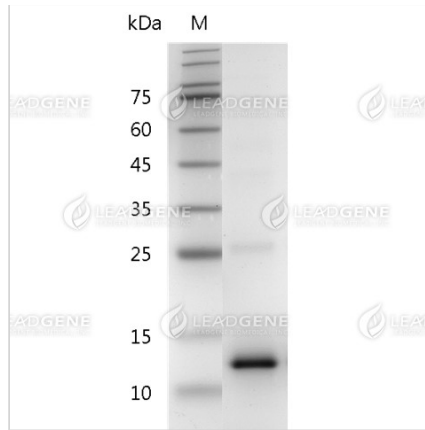
+886-2-27065528

CLD Center

+886-6-2536677



Measure by its ability to chemoattract human THP1 cells using a concentration range of 10-50 ng/mL. Activity analysis of recombinant Human CCL2, His Tag, E. coli.



SDS-PAGE analysis of recombinant human CCL2.

Disclaimer : For Research Use or Further Manufacturing Only.