

## Human CXCL11, His Tag, E. coli

**Catalog Number** LDG162PHE

**Package** 5 µg / 20 µg / 100 µg / Customized package

For full product information, images and publications, please visit [our website](#).



### Specifications

#### Species of Origin

Human

#### Affinity Tag

His Tag (N-term)

#### Purity

>98% as determined by SDS-PAGE analysis.

#### Activity

Measure by its ability to chemoattract BaF3 cells transfected with human CXCR3. The ED<sub>50</sub> for this effect is <4 ng/mL.

#### Form

Lyophilized

#### Expression System

Escherichia coli

#### Storage Buffer

Lyophilized from a 0.2 µm filtered solution of PBS, pH 7.4.

#### Molecular weight

The protein has a calculated MW of 9.11 kDa. The protein migrates as 11 kDa under reducing condition (SDS-PAGE analysis).

#### Endotoxin Level

<0.1 EU per 1 µg of the protein by the LAL method.

### Background

#### Tainan Headquarter

+886-6-2536677 +886-6-2531536

info@leadgene.com.tw

#### Taipei Office

+886-2-27065528

### Background

C-X-C motif chemokine 11 (CXCL11) also named Interferon-gamma-inducible protein 9 (IP-9), which is a chemokine of the intercrine alpha family. CXCL11 is a 8.1kDa protein containing 73 amino acid residues. To CXCR3, CXCL11 has higher affinity than CXCL10 and CXCL9 which plays a role in immune activation. CXCL11 induces the activation of T cells which is also a chemotaxis for T cells. The CXCL11 produced in response for IFN Family.

### Uniprot ID

# O14625 1

### Synonyms

Interferon gamma-inducible protein 9, IP-9, Interferon-inducible T-cell alpha chemoattractant, I-TAC, Small-inducible cytokine B11, C-X-C motif chemokine 11

### Sequence Note

Phe73-Phe73

## Instruction

### Reconstitution

It is recommended to reconstitute the lyophilized protein in sterile H<sub>2</sub>O to a concentration not less than 200 µg/mL and incubate the stock solution for at least 20 min to ensure sufficient re-dissolved.

### Stability & Storage

This product is stable after storage at:

- -20°C for 12 months in lyophilized state from date of receipt.
- -20°C or -80°C for 1 month under sterile conditions after reconstitution.

Avoid repeated freeze/thaw cycles.

### Shipping

The product is shipped with polar packs. Upon receipt, store it immediately at -20°C or lower for long term storage.

## Image

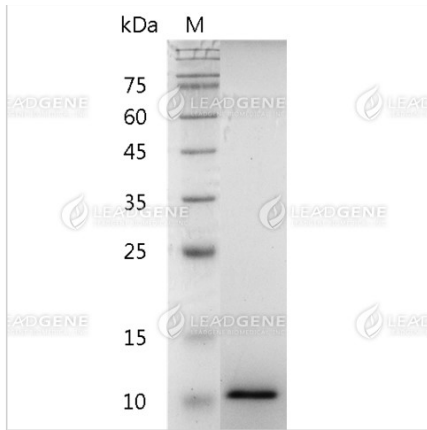
### Tainan Headquarter

+886-6-2536677 +886-6-2531536

info@leadgene.com.tw

### Taipei Office

+886-2-27065528



SDS-PAGE analysis of  
recombinant human CXCL11.

**Disclaimer :** For Research Use or Further Manufacturing Only.