

## Human CXCL10, His Tag, E. coli

<b>Catalog Number</b>	LDG161PHE
<b>Package</b>	5 µg / 20 µg / 100 µg / Customized package

For full product information, images and publications, please visit [our website](#).



### Specifications

#### Species of Origin

Human

#### Expression System

Escherichia coli

#### Affinity Tag

His Tag (N-term)

#### Storage Buffer

Lyophilized from a 0.2 µm filtered solution of PBS, pH 7.4.

#### Purity

>98% as determined by SDS-PAGE analysis.

#### Molecular weight

The protein has a calculated MW of 9.45 kDa.  
The protein migrates as 9-11 kDa under reducing condition (SDS-PAGE analysis).

#### Activity

Measure by its ability to chemoattract human THP1 cells using a concentration range of 10-50 ng/mL.

#### Endotoxin Level

<0.1 EU per 1 µg of the protein by the LAL method.

#### Form

Lyophilized

### Background

#### Tainan Headquarters

+886-6-2536677

bd@leadgene.com.tw

#### Innovation & Research Center

+886-2-27065528

#### CLD Center

+886-6-2536677

### Background

C-X-C motif chemokine 10 (CXCL10) also named Interferon gamma-induced protein 10 (IP-10), which is a chemokine of the intercrine alpha family. CXCL10 is a 8.55kDa protein containing 77 amino acid residues. CXCL10 is produced by the several cell types like monocytes and endothelial cells, which are responded for IFN $\gamma$ . CXCL10 is a chemotaxis for T cells, NK cells and macrophages. CXCL10 also binds the CXCR3 that induce the cell migration and activation like T cells and dendritic cells

### Uniprot ID

# P02778 2

### Synonyms

Small-inducible cytokine B10, C-X-C motif chemokine 10

### Sequence Note

Val22-Pro98

## Instruction

### Reconstitution

It is recommended to reconstitute the lyophilized protein in sterile H<sub>2</sub>O to a concentration not less than 200  $\mu$ g/mL and incubate the stock solution for at least 20 min to ensure sufficient re-dissolved.

### Stability & Storage

This product is stable after storage at:

- -20°C for 12 months in lyophilized state from date of receipt.
- -20°C or -80°C for 1 month under sterile conditions after reconstitution.

Avoid repeated freeze/thaw cycles.

### Shipping

The product is shipped with polar packs. Upon receipt, store it immediately at -20°C or lower for long term storage.

## Image

### Tainan Headquarters

+886-6-2536677

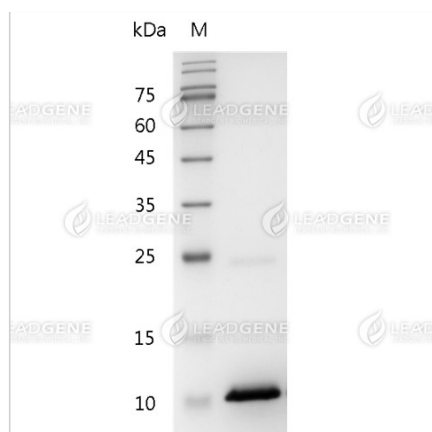
✉ [bd@leadgene.com.tw](mailto:bd@leadgene.com.tw)

### Innovation & Research Center

+886-2-27065528

### CLD Center

+886-6-2536677



SDS-PAGE analysis of recombinant human CXCL10.

**Disclaimer :** For Research Use or Further Manufacturing Only.

**Tainan Headquarters**

+886-6-2536677

bd@leadgene.com.tw

**Innovation & Research Center**

+886-2-27065528

**CLD Center**

+886-6-2536677