

Human CXCL9, His Tag, E. coli

Catalog Number	LDG160PHE
Package	5 µg / 20 µg / 100 µg / Customized package

For full product information, images and publications, please visit [our website](#).



Specifications

Species of Origin

Human

Expression System

Escherichia coli

Affinity Tag

His Tag (N-term)

Storage Buffer

Lyophilized from a 0.2 µm filtered solution of PBS, pH 7.4.

Purity

>98% as determined by SDS-PAGE analysis.

Molecular weight

The protein has a calculated MW of 12.53 kDa. The protein migrates as 18 kDa under reducing condition (SDS-PAGE analysis).

Activity

Measure by its ability to chemoattract human THP1 cells using a concentration range of 50-200 ng/mL.

Endotoxin Level

<0.1 EU per 1 µg of the protein by the LAL method.

Form

Lyophilized

Background

Tainan Headquarters

+886-6-2536677

bd@leadgene.com.tw

Innovation & Research Center

+886-2-27065528

CLD Center

+886-6-2536677

Background

C-X-C motif chemokine 9 (CXCL9) also named monokine induced by gamma interferon (MIG), which is a chemokine of the intercrine alpha family. CXCL9 is a 11.4kDa protein containing 103 amino acid residues. CXCL9 controls the immune cells by binding the CXCR3 which is including the cell migration and activation. During inflammation, CXCL9 is a chemotaxis for lymphocyte and macrophages. CXCL9 is participated in the process of tumor proliferation and metastasis.

Uniprot ID

Q07325 1

Synonyms

Gamma-interferon-induced monokine, Monokine induced by interferon-gamma, HuMIG, MIG, Small-inducible cytokine B9, C-X-C motif chemokine 9

Sequence Note

Thr21-Thr125

Instruction

Reconstitution

It is recommended to reconstitute the lyophilized protein in sterile H₂O to a concentration not less than 200 µg/mL and incubate the stock solution for at least 20 min to ensure sufficient re-dissolved.

Stability & Storage

This product is stable after storage at:

- -20°C for 12 months in lyophilized state from date of receipt.
- -20°C or -80°C for 1 month under sterile conditions after reconstitution.

Avoid repeated freeze/thaw cycles.

Shipping

The product is shipped with polar packs. Upon receipt, store it immediately at -20°C or lower for long term storage.

Image

Tainan Headquarters

+886-6-2536677

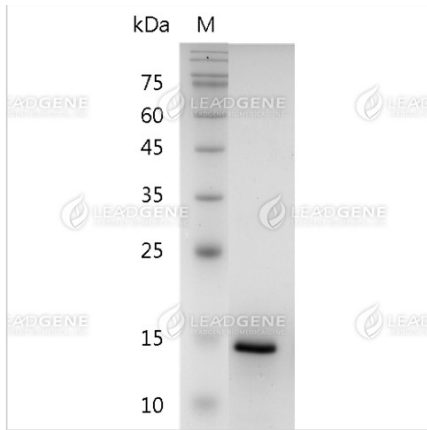
bd@leadgene.com.tw

Innovation & Research Center

+886-2-27065528

CLD Center

+886-6-2536677



SDS-PAGE analysis of recombinant human CXCL9.

Disclaimer : For Research Use or Further Manufacturing Only.