

Human CXCL6, His Tag, E. coli

Catalog Number	LDG158PHE
Package	5 µg / 20 µg / 100 µg / Customized package

For full product information, images and publications, please visit [our website](#).



Specifications

Species of Origin

Human

Affinity Tag

His Tag (N-term)

Purity

>98% as determined by SDS-PAGE analysis.

Activity

Measure by its ability to chemoattract human THP1 cells using a concentration range of 50-100 ng/mL.

Form

Lyophilized

Expression System

Escherichia coli

Storage Buffer

Lyophilized from a 0.2 µm filtered solution of PBS, pH 7.4.

Molecular weight

The protein has a calculated MW of 8.97 kDa. The protein migrates as 11 kDa under reducing condition (SDS-PAGE analysis).

Endotoxin Level

<0.1 EU per 1 µg of the protein by the LAL method.

Background

Tainan Headquarters

+886-6-2536677

bd@leadgene.com.tw

Innovation & Research Center

+886-2-27065528

CLD Center

+886-6-2536677

Background

C-X-C motif chemokine 6 (CXCL6) also named granulocyte chemotactic protein 2 (GCP-2), which is a chemokine of the intercrine alpha family. CXCL6 is a 8.3kDa protein containing 75 amino acid residues. CXCL6 has a significant role in resistance of gram-positive and gram-negative bacteria which is a chemotaxis for neutrophil granulocytes. CXCL6 has a role in the process of carcinogenesis which affects proliferation and metastasis of OS cells by the interaction with CXCR1 /CXCR2.

Uniprot ID

P80162 4

Synonyms

Chemokine alpha 3, CKA-3, Granulocyte chemotactic protein 2, GCP-2, Small-inducible cytokine B6, C-X-C motif chemokine 6

Sequence Note

Val40-Asn114

Instruction

Reconstitution

It is recommended to reconstitute the lyophilized protein in sterile H₂O to a concentration of 200 µg/mL and incubate the stock solution for at least 20 min to ensure sufficient re-dissolved.

Stability & Storage

This product is stable after storage at:

- -20°C for 12 months in lyophilized state from date of receipt.
- -20°C or -80°C for 1 month under sterile conditions after reconstitution.

Avoid repeated freeze/thaw cycles.

Shipping

The product is shipped with polar packs. Upon receipt, store it immediately at -20°C or lower for long term storage.

Image

Tainan Headquarters

+886-6-2536677

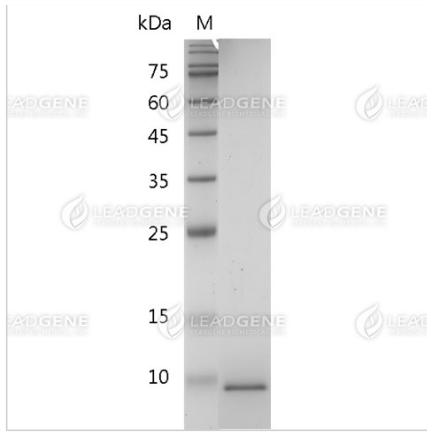
✉ bd@leadgene.com.tw

Innovation & Research Center

+886-2-27065528

CLD Center

+886-6-2536677



SDS-PAGE analysis of recombinant human CXCL6.

Disclaimer : For Research Use or Further Manufacturing Only.