

Human CXCL3, His Tag, E. coli

Catalog Number	LDG155PHE
Package	5 µg / 20 µg / 100 µg / Customized package

For full product information, images and publications, please visit [our website](#).



Specifications

Species of Origin

Human

Expression System

Escherichia coli

Affinity Tag

His Tag (N-term)

Storage Buffer

Lyophilized from a 0.2 µm filtered solution of PBS, pH 7.4.

Purity

>98% as determined by SDS-PAGE analysis.

Molecular weight

The protein has a calculated MW of 8.67 kDa. The protein migrates as 11 kDa under reducing condition (SDS-PAGE analysis).

Activity

Measure by its ability to chemoattract human THP1 cells. Chemotactic activity was observed at a concentration of 50 ng/mL.

Endotoxin Level

<0.1 EU per 1 µg of the protein by the LAL method.

Form

Lyophilized

Background

Tainan Headquarters

+886-6-2536677

bd@leadgene.com.tw

Innovation & Research Center

+886-2-27065528

CLD Center

+886-6-2536677

Background

C-X-C motif chemokine 3 (CXCL3) also named Growth-regulated oncogene gamma (GROγ), which is a chemokine of the intercrine alpha family. CXCL3 is a 8kDa protein containing 73 amino acid residues. During inflammation, CXCL3 is activated by the TNF and IL-1 which mediates the monocytes migration and adhesion by targeting the CXCR2. CXCL3 activates the JNK activity which induce the cell differentiation.

Uniprot ID

P19876 1

Synonyms

C-X-C motif chemokine 3, GRO-gamma, 1-73, Growth-regulated protein gamma, Macrophage inflammatory protein 2-beta, MIP2-beta, 5-73

Sequence Note

Ala35-Asn107

Instruction

Reconstitution

It is recommended to reconstitute the lyophilized protein in sterile H₂O to a concentration of 200 µg/mL and incubate the stock solution for at least 20 min to ensure sufficient re-dissolved.

Stability & Storage

This product is stable after storage at:

- -20°C for 12 months in lyophilized state from date of receipt.
- -20°C or -80°C for 1 month under sterile conditions after reconstitution.

Avoid repeated freeze/thaw cycles.

Shipping

The product is shipped with polar packs. Upon receipt, store it immediately at -20°C or lower for long term storage.

Image

Tainan Headquarters

+886-6-2536677

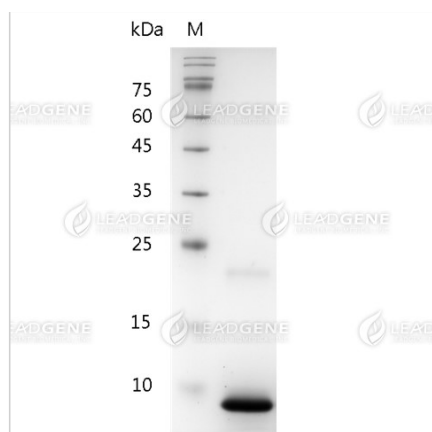
✉ bd@leadgene.com.tw

Innovation & Research Center

+886-2-27065528

CLD Center

+886-6-2536677



SDS-PAGE analysis of recombinant human CXCL3.

Disclaimer : For Research Use or Further Manufacturing Only.