

Human Galectin-13, His Tag, E. coli

Catalog Number	LDG149PHE
Package	5 µg / 20 µg / 100 µg / Customized package

For full product information, images and publications, please visit [our website](#).



Specifications

Species of Origin

Human

Affinity Tag

His Tag (N-term)

Purity

>95% as determined by SDS-PAGE analysis.

Endotoxin Level

<0.1 EU per 1 µg of the protein by the LAL method.

Expression System

Escherichia coli

Storage Buffer

Lyophilized from a 0.2 µm filtered solution of PBS, pH 7.4.

Molecular weight

The protein has a calculated MW of 16.9 kDa.
The protein migrates as 17 kDa under reducing condition (SDS-PAGE analysis).

Form

Lyophilized

Background

Tainan Headquarters

+886-6-2536677

bd@leadgene.com.tw

Innovation & Research Center

+886-2-27065528

CLD Center

+886-6-2536677

Background

Galectin-13 (Gal-13) is a lectin family member and is one of the prototype galectins. It contains one carbohydrate recognition domain (CRD), responsible for β -galactoside binding, and is biologically active as homodimers. Galectin-13 is expressed in the placenta, contributing to T cell apoptosis, immune regulation, and immune tolerance, which is indispensable for fetal development. For example, galectin-13 organizes crystal-like aggregates in the decidua, consequently attracting and killing maternal immune cells. Furthermore, galectin-13 is essential for driving neutrophil polarization in the placental-growth-permissive phenotype.

Uniprot ID

#Q9UHV8

Synonyms

Gal-13, Galactoside-binding soluble lectin 13, Placental tissue protein 13, PP13, Placental protein 13

Sequence Note

Ser2-Asn139

Instruction

Reconstitution

It is recommended to reconstitute the lyophilized protein in sterile H₂O to a concentration of 200 μ g/mL and incubate the stock solution for at least 20 min to ensure sufficient re-dissolved.

Stability & Storage

This product is stable after storage at:

- -20°C for 12 months in lyophilized state from date of receipt.
- -20°C or -80°C for 1 month under sterile conditions after reconstitution.

Avoid repeated freeze/thaw cycles.

Shipping

The product is shipped with polar packs. Upon receipt, store it immediately at -20°C or lower for long term storage.

Image

Tainan Headquarters

+886-6-2536677

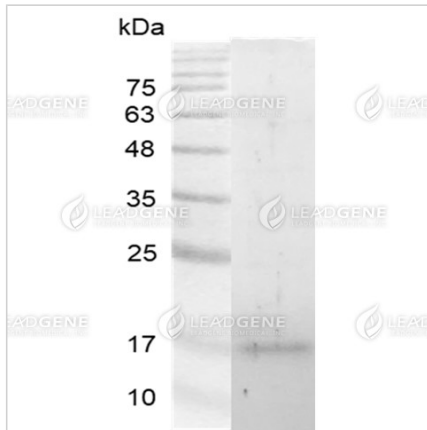
bd@leadgene.com.tw

Innovation & Research Center

+886-2-27065528

CLD Center

+886-6-2536677



SDS-PAGE analysis of recombinant human Galectin-13.

Disclaimer : For Research Use or Further Manufacturing Only.