

## Human Galectin-10, His Tag, E. coli

<b>Catalog Number</b>	LDG147PHE
<b>Package</b>	5 µg / 20 µg / 100 µg / Customized package

For full product information, images and publications, please visit [our website](#).



### Specifications

#### Species of Origin

Human

#### Affinity Tag

His Tag (N-term)

#### Purity

>98% as determined by SDS-PAGE analysis.

#### Activity

Measure by its ability to chemoattract human THP1 cells using a concentration range of 0.2-25 µg/mL.

#### Form

Lyophilized

#### Expression System

Escherichia coli

#### Storage Buffer

Lyophilized from a 0.2 µm filtered solution of PBS, pH 7.4.

#### Molecular weight

The protein has a calculated MW of 16.31 kDa. The protein migrates as 16-19 kDa under reducing condition (SDS-PAGE analysis).

#### Endotoxin Level

<0.1 EU per 1 µg of the protein by the LAL method.

### Background

#### Tainan Headquarters

+886-6-2536677

bd@leadgene.com.tw

#### Innovation & Research Center

+886-2-27065528

#### CLD Center

+886-6-2536677

### Background

Galectin-10 (Gal-10) is a lectin family member and is one of the prototype galectins. It contains one carbohydrate recognition domain (CRD), responsible for  $\beta$ -galactoside binding, and is biologically active as homodimers. It has been reported that galectin-10 is presented in eosinophils but also detected in basophils and macrophages. Accumulated evidence indicates that galectin-10 spontaneously forms Charcot-Leyden crystals (CLCs), participating in allergic responses and related inflammatory reactions. Several binding partners for galectin-10 have been identified, including eosinophil granule cationic ribonucleases, eosinophil-derived neurotoxin (EDN, RNS2), and eosinophil cationic protein (ECP, RNS3), demonstrating the interaction is essential for eosinophil differentiation and granulogenesis.

### Uniprot ID

#Q05315

### Synonyms

Gal-10, Charcot-Leyden crystal protein, CLC, Eosinophil lysophospholipase, Lysolecithin acylhydrolase

### Sequence Note

Ser2-Arg142

## Instruction

### Reconstitution

It is recommended to reconstitute the lyophilized protein in sterile H<sub>2</sub>O to a concentration not less than 200  $\mu$ g/mL and incubate the stock solution for at least 20 min to ensure sufficient re-dissolved.

### Shipping

The product is shipped with polar packs. Upon receipt, store it immediately at -20°C or lower for long term storage.

### Tainan Headquarters

+886-6-2536677

✉ [bd@leadgene.com.tw](mailto:bd@leadgene.com.tw)

### Innovation & Research Center

+886-2-27065528

### CLD Center

+886-6-2536677

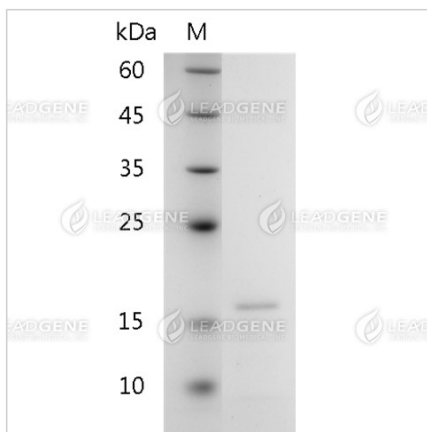
### Stability & Storage

This product is stable after storage at:

- -20°C for 12 months in lyophilized state from date of receipt.
- -20°C or -80°C for 1 month under sterile conditions after reconstitution.

Avoid repeated freeze/thaw cycles.

### Image



SDS-PAGE analysis of recombinant human Galectin-10.

**Disclaimer :** For Research Use or Further Manufacturing Only.