

## Human Galectin-4, His Tag, E. coli

|                       |  |
|-----------------------|--|
| <b>Catalog Number</b> | LDG143PHE                                  |
| <b>Package</b>        | 5 µg / 20 µg / 100 µg / Customized package |

For full product information, images and publications, please visit [our website](#).



### Specifications

#### Species of Origin

Human

#### Expression System

Escherichia coli

#### Affinity Tag

His Tag (N-term)

#### Storage Buffer

Lyophilized from a 0.2 µm filtered solution of PBS, pH 7.4.

#### Purity

>98% as determined by SDS-PAGE analysis.

#### Molecular weight

The protein has a calculated MW of 36.8 kDa. The protein migrates as 37 kDa under reducing condition (SDS-PAGE analysis).

#### Activity

Measure by its ability to chemoattract human THP1 cells using a concentration range of 0.5-2.5 µg/mL.

#### Endotoxin Level

<0.1 EU per 1 µg of the protein by the LAL method.

#### Form

Lyophilized

### Background

#### Tainan Headquarters

+886-6-2536677

bd@leadgene.com.tw

#### Innovation & Research Center

+886-2-27065528

#### CLD Center

+886-6-2536677

### Background

Galectin-4 (Gal-4) is a lectin family member and is one of the tandem repeat-type galectins containing two carbohydrate recognition domains (CRD) connected by a linker region in a single peptide chain. The CRD is responsible for  $\beta$ -galactoside binding, and several binding partners for galectin-4 have been identified, including human blood group antigens, glycoproteins, mucin like membrane MUC1, glycosphingolipids, and sulfated cholesterol. Galectin-4 is constitutively presented in the intestine and stomach, uterine epithelial cells, blood vessel walls, hippocampal and cortical neurons. It serves important functions in numerous biological activities including lipid raft stabilization, protein apical trafficking, cell adhesion, wound healing, intestinal inflammation, and host defense.

### Uniprot ID

#P56470

### Synonyms

Gal-4, Antigen NY-CO-27, L-36 lactose-binding protein, L36LBP, Lactose-binding lectin 4

### Sequence Note

Ala2-Ile323

## Instruction

### Reconstitution

It is recommended to reconstitute the lyophilized protein in sterile H<sub>2</sub>O to a concentration not less than 200  $\mu$ g/mL and incubate the stock solution for at least 20 min to ensure sufficient re-dissolved.

### Shipping

The product is shipped with polar packs. Upon receipt, store it immediately at -20°C or lower for long term storage.

### Tainan Headquarters

+886-6-2536677

✉ [bd@leadgene.com.tw](mailto:bd@leadgene.com.tw)

### Innovation & Research Center

+886-2-27065528

### CLD Center

+886-6-2536677

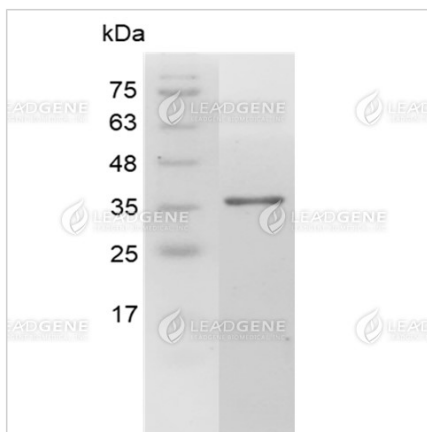
### Stability & Storage

This product is stable after storage at:

- -20°C for 12 months in lyophilized state from date of receipt.
- -20°C or -80°C for 1 month under sterile conditions after reconstitution.

Avoid repeated freeze/thaw cycles.

### Image



SDS-PAGE analysis of recombinant human Galectin-4.

**Disclaimer :** For Research Use or Further Manufacturing Only.