

Human Galectin-2, His Tag, E. coli

Catalog Number	LDG141PHE
Package	5 µg / 20 µg / 100 µg / Customized package

For full product information, images and publications, please visit [our website](#).



Specifications

Species of Origin

Human

Expression System

Escherichia coli

Affinity Tag

His Tag (N-term)

Storage Buffer

Lyophilized from a 0.2 µm filtered solution of PBS, pH 7.4.

Purity

>98% as determined by SDS-PAGE analysis.

Molecular weight

The protein has a calculated MW of 15.5 kDa. The protein migrates as 15 kDa under reducing condition (SDS-PAGE analysis).

Activity

Measure by its ability to chemoattract human THP1 cells using a concentration range of 2.5-25 µg/mL.

Endotoxin Level

<0.1 EU per 1 µg of the protein by the LAL method.

Form

Lyophilized

Background

Tainan Headquarters

+886-6-2536677

bd@leadgene.com.tw

Innovation & Research Center

+886-2-27065528

CLD Center

+886-6-2536677

Background

Galectin-2 (Gal-2) is a lectin family member and structurally closely related to galectin-1. It contains one carbohydrate recognition domain (CRD), responsible for β -galactoside binding, and is biologically active as homodimers. Galectin-2 serves as a proapoptotic effector for activated T cells through caspase-3 signaling. Moreover, galectin-2 has emerged as a crucial factor in driving the macrophage to CD40-positive M1 polarization, leading to arteriogenesis attenuation and collateral arteries remodeling.

Uniprot ID

#P05162

Synonyms

Gal-2, Beta-galactoside-binding lectin L-14-II, HL14, Lactose-binding lectin 2, S-Lac lectin 2

Sequence Note

Thr2-Glu132

Instruction

Reconstitution

It is recommended to reconstitute the lyophilized protein in sterile H₂O to a concentration of 200 μ g/mL and incubate the stock solution for at least 20 min to ensure sufficient re-dissolved.

Stability & Storage

This product is stable after storage at:

- -20°C for 12 months in lyophilized state from date of receipt.
- -20°C or -80°C for 1 month under sterile conditions after reconstitution.

Avoid repeated freeze/thaw cycles.

Shipping

The product is shipped with polar packs. Upon receipt, store it immediately at -20°C or lower for long term storage.

Image

Tainan Headquarters

+886-6-2536677

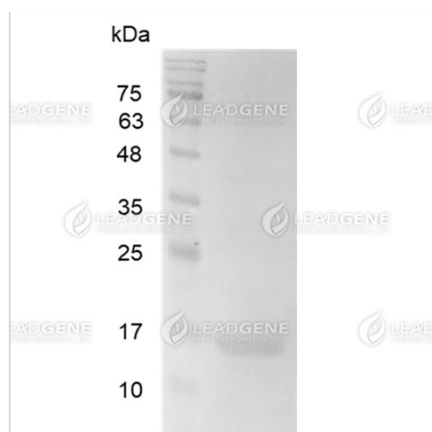
✉ bd@leadgene.com.tw

Innovation & Research Center

+886-2-27065528

CLD Center

+886-6-2536677



SDS-PAGE analysis of recombinant human Galectin-2.

Disclaimer : For Research Use or Further Manufacturing Only.