

Human Neurturin, His Tag, E. coli

Catalog Number	LDG136PHE
Package	5 µg / 20 µg / 100 µg / Customized package

For full product information, images and publications, please visit [our website](#).



Specifications

Species of Origin

Human

Affinity Tag

His Tag (C-term)

Purity

>98% as determined by SDS-PAGE analysis.

Activity

Measure by its ability to induce proliferation in SH-SY5Y cells. The ED₅₀ for this effect is <50 ng/mL.

Form

Lyophilized

Expression System

Escherichia coli

Storage Buffer

Lyophilized from a 0.2 µm filtered solution of PBS, pH 7.4.

Molecular weight

The protein has a calculated MW of 12.62 kDa. The protein migrates as 13 kDa under reducing condition (SDS-PAGE analysis).

Endotoxin Level

<0.1 EU per 1 µg of the protein by the LAL method.

Background

Tainan Headquarters

+886-6-2536677

bd@leadgene.com.tw

Innovation & Research Center

+886-2-27065528

CLD Center

+886-6-2536677

Background

Human Neurturin is a 22 kDa cytokine with 197 amino acid residues. Neurturin belongs to the same TGF-beta (transforming Growth Factors β) family. When Neurturin binds to GFR α -2 (GPI-linked receptor termed GDNF family receptor α -2), this complex activates Ret receptor tyrosine kinase and its downstream signaling pathway.

Uniprot ID

#Q99748

Synonyms

Neurturin

Sequence Note

Ala96-Val197

Instruction

Reconstitution

It is recommended to reconstitute the lyophilized protein in sterile H₂O to a concentration of 200 μ g/mL and incubate the stock solution for at least 20 min to ensure sufficient re-dissolved.

Stability & Storage

This product is stable after storage at:

- -20°C for 12 months in lyophilized state from date of receipt.
- -20°C or -80°C for 1 month under sterile conditions after reconstitution.

Avoid repeated freeze/thaw cycles.

Shipping

The product is shipped with polar packs. Upon receipt, store it immediately at -20°C or lower for long term storage.

Image

Tainan Headquarters

+886-6-2536677

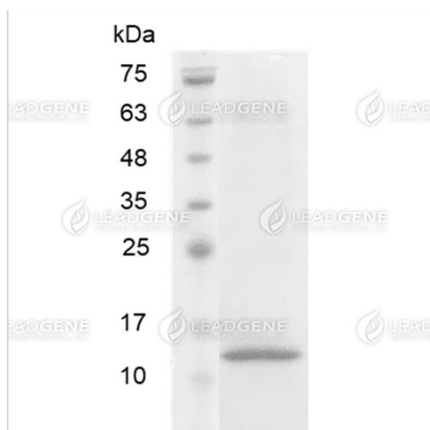
✉ bd@leadgene.com.tw

Innovation & Research Center

+886-2-27065528

CLD Center

+886-6-2536677



SDS-PAGE analysis of recombinant human Neurturin.

Disclaimer : For Research Use or Further Manufacturing Only.