

Human GDNF, His Tag, E. coli

Catalog Number LDG132PHE

Package 5 µg / 20 µg / 100 µg / Customized package

For full product information, images and publications, please visit [our website](#).



Specifications

Species of Origin

Human

Affinity Tag

His Tag (C-term)

Purity

>95% as determined by SDS-PAGE analysis.

Activity

Measure by its ability to induce proliferation in SH-SY5Y cells. The ED₅₀ for this effect is <10 ng/mL.

Form

Lyophilized

Expression System

Escherichia coli

Storage Buffer

Lyophilized from a 0.2 µm filtered solution containing 20 mM sodium citrate and 0.2 M NaCl, pH 4.5.

Molecular weight

The protein has a calculated MW of 16.01 kDa. The protein migrates as 16 kDa under reducing condition (SDS-PAGE analysis).

Endotoxin Level

<0.1 EU per 1 µg of the protein by the LAL method.

Background

Tainan Headquarter

+886-6-2536677 +886-6-2531536

info@leadgene.com.tw

Taipei Office

+886-2-27065528

Background

Glial cell line-derived neurotrophic factor (GDNF) is the neurotrophic factor, belonging to the GDNF family of ligands (GFL) and identifying as a therapeutic candidate in Parkinson's disease. GDNF is a 23.7 kDa protein containing 211 residues that plays a critical role in promoting the survival and differentiation of midbrain dopamine neurons. Besides, GDNF is revealed to facilitate the development of peripheral tissues such as kidney, pancreas and lung. Additionally, as a member of GFL, GDNF also takes part in the progression of tumor.

Uniprot ID

#P39905

Synonyms

Glial cell line-derived neurotrophic factor, GDNF, Astrocyte-derived trophic factor, ATF

Sequence Note

Ser78-Ile211

Instruction

Reconstitution

It is recommended to reconstitute the lyophilized protein in sterile H₂O to a concentration not less than 200 µg/mL and incubate the stock solution for at least 20 min to ensure sufficient re-dissolved.

Stability & Storage

This product is stable after storage at:

- -20°C for 12 months in lyophilized state from date of receipt.
- -20°C or -80°C for 1 month under sterile conditions after reconstitution.

Avoid repeated freeze/thaw cycles.

Shipping

The product is shipped with polar packs. Upon receipt, store it immediately at -20°C or lower for long term storage.

Tainan Headquarter

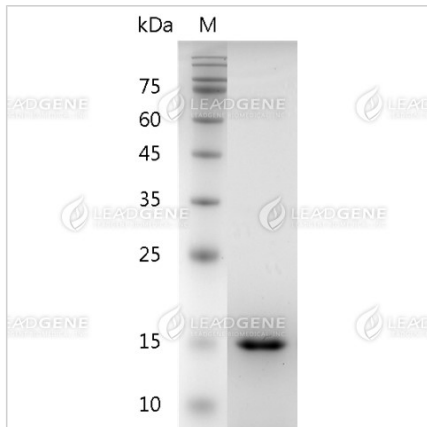
+886-6-2536677 +886-6-2531536

info@leadgene.com.tw

Taipei Office

+886-2-27065528

Image



SDS-PAGE analysis of
recombinant human GDNF.

Disclaimer : For Research Use or Further Manufacturing Only.

Tainan Headquarter

+886-6-2536677 +886-6-2531536

info@leadgene.com.tw

Taipei Office

+886-2-27065528