

Mouse MMP2, His-Avi Tag, CHO

Catalog Number	LDG131PMM
Package	5 µg / 20 µg / 100 µg / Customized package

For full product information, images and publications, please visit [our website](#).



Specifications

Species of Origin

Mouse

Affinity Tag

His-Avi tag (C-term)

Purity

>95% as determined by SDS-PAGE analysis.

Endotoxin Level

<0.1 EU per 1 µg of the protein by the LAL method.

Form

Lyophilized

Expression System

CHO

Storage Buffer

Lyophilized from a 0.2 µm filtered solution of PBS, pH 7.4.

Molecular weight

The protein has a calculated MW of 31.22 kDa.
The protein migrates as 30-35 kDa under reducing condition (SDS-PAGE analysis).

Mycoplasma

Not detected

Background

Tainan Headquarters

+886-6-2536677

bd@leadgene.com.tw

Innovation & Research Center

+886-2-27065528

CLD Center

+886-6-2536677

Background

Matrix Metalloproteinase 2 (MMP2), also known as gelatinase A, is a zinc-dependent endopeptidase that plays a crucial role in the degradation of extracellular matrix components, particularly type IV collagen, a major structural component of basement membranes. It is involved in various physiological processes such as tissue remodeling, wound healing, and angiogenesis, as well as pathological conditions including tumor invasion, metastasis, and cardiovascular diseases.

Uniprot ID

P33434

Synonyms

MMP-2, Matrix metalloproteinase-2, Gelatinase A, CLG4A, TBE-1, Type IV collagenase

Sequence Note

Met409-Cys662

Instruction

Reconstitution

It is recommended to reconstitute the lyophilized protein in sterile H₂O to a concentration not less than 200 µg/mL and incubate the stock solution for at least 20 min to ensure sufficient re-dissolved.

Stability & Storage

This product is stable after storage at:

- -20°C for 12 months in lyophilized state from date of receipt.
- -20°C or -80°C for 1 month under sterile conditions after reconstitution.

Avoid repeated freeze/thaw cycles.

Shipping

The product is shipped with polar packs. Upon receipt, store it immediately at -20°C or lower for long term storage.

Image

Tainan Headquarters

+886-6-2536677

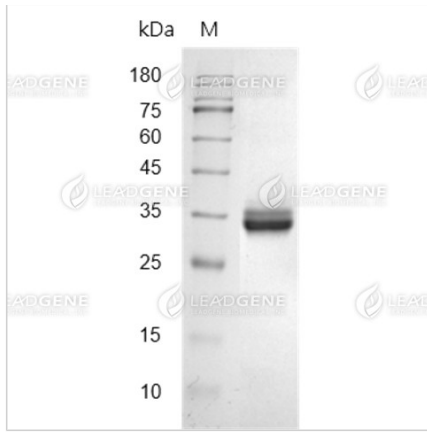
✉ bd@leadgene.com.tw

Innovation & Research Center

+886-2-27065528

CLD Center

+886-6-2536677



SDS-PAGE analysis of recombinant
Mouse MMP2.

Disclaimer : For Research Use or Further Manufacturing Only.