

Human CNTF, His Tag, E. coli

Catalog Number LDG131PHE

Package 5 µg / 20 µg / 100 µg / Customized package

For full product information, images and publications, please visit [our website](#).



Specifications

Species of Origin

Human

Affinity Tag

His Tag (C-term)

Purity

>98% as determined by SDS-PAGE analysis.

Activity

Measure by its ability to induce proliferation in TF-1 cells. The ED₅₀ for this effect is <0.15 µg/mL.

Form

Lyophilized

Expression System

Escherichia coli

Storage Buffer

Lyophilized from a 0.2 µm filtered solution of PBS, pH 7.4.

Molecular weight

The protein has a calculated MW of 23.74 kDa. The protein migrates as 25 kDa under reducing condition (SDS-PAGE analysis).

Endotoxin Level

<0.1 EU per 1 µg of the protein by the LAL method.

Background

Tainan Headquarter

+886-6-2536677 +886-6-2531536

info@leadgene.com.tw

Taipei Office

+886-2-27065528

Background

Ciliary neurotrophic factor (CNTF) is the member of IL-6 cytokine family and expressed in the nervous system. CNTF is 22.9 kDa neurotrophic factor containing 200 residues, which shows multiple effects in vertebrate retinogenesis. Besides, CNTF acts as a promoter that not only accelerates adult neurogenesis but also increases the survival of neuron after injury. On the other hands, reducing number of hippocampal GABAergic interneurons, as well as 5-HT levels and 5-HT1A receptor expression has been found in CNTF knockout female mice, indicating that CNTF may influence affective behavior in females by regulation of neurotransmission.

Uniprot ID

#P26441

Synonyms

Ciliary neurotrophic factor, CNTF

Sequence Note

Met1-Met200

Instruction

Reconstitution

It is recommended to reconstitute the lyophilized protein in sterile H₂O to a concentration not less than 200 µg/mL and incubate the stock solution for at least 20 min to ensure sufficient re-dissolved.

Shipping

The product is shipped with polar packs. Upon receipt, store it immediately at -20°C or lower for long term storage.

Tainan Headquarter

+886-6-2536677 +886-6-2531536

info@leadgene.com.tw

Taipei Office

+886-2-27065528

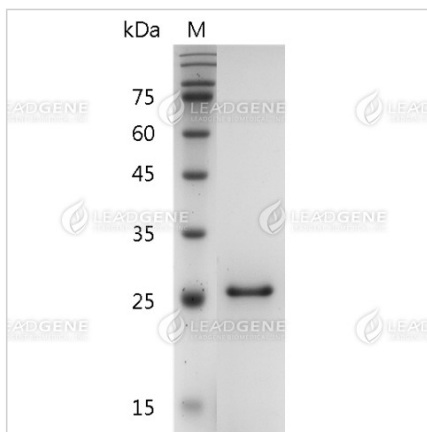
Stability & Storage

This product is stable after storage at:

- -20°C for 12 months in lyophilized state from date of receipt.
- -20°C or -80°C for 1 month under sterile conditions after reconstitution.

Avoid repeated freeze/thaw cycles.

Image



SDS-PAGE analysis of recombinant human CNTF.

Disclaimer : For Research Use or Further Manufacturing Only.

Tainan Headquarter

+886-6-2536677 +886-6-2531536

info@leadgene.com.tw

Taipei Office

+886-2-27065528