

Human TL1A, His Tag, E. coli

Catalog Number LDG126PHE

Package 5 µg / 20 µg / 100 µg / Customized package

For full product information, images and publications, please visit [our website](#).



Specifications

Species of Origin

Human

Affinity Tag

His Tag (C-term)

Purity

>98% as determined by SDS-PAGE analysis.

Activity

Measure by its ability to induce TF-1 cells proliferation. The ED₅₀ for this effect is <0.2 ng/mL.

Form

Lyophilized

Expression System

Escherichia coli

Storage Buffer

Lyophilized from a 0.2 µm filtered solution of PBS, pH 8.0.

Molecular weight

The protein has a calculated MW of 22.95 kDa. The protein migrates as 24 kDa under reducing condition (SDS-PAGE analysis).

Endotoxin Level

<0.1 EU per 1 µg of the protein by the LAL method.

Background

Tainan Headquarter

+886-6-2536677 +886-6-2531536

info@leadgene.com.tw

Taipei Office

+886-2-27065528

Background

TL1A also known as VEGI and TNFSF15, which belongs to TNF ligand superfamily. TL1A is a 28 kDa type II membrane protein containing 251 residues that predominantly expressed in endothelial cells. TL1A is able to promote NFκB activation in cells by interacting with DR3. Besides, TL1A can also induces cell apoptosis through activating caspases. Additionally, the responsiveness of IL-2 from activated T cells has been shown to induce by TL1A treatment.

Uniprot ID

#O95150

Synonyms

TNF-Like Ligand 1A, TL1A, Vascular endothelial cell growth inhibitor, Tumor necrosis factor ligand superfamily member 15

Sequence Note

Gln58-Leu251

Instruction

Reconstitution

It is recommended to reconstitute the lyophilized protein in sterile H₂O to a concentration not less than 200 µg/mL and incubate the stock solution for at least 20 min to ensure sufficient re-dissolved.

Stability & Storage

This product is stable after storage at:

- -20°C for 12 months in lyophilized state from date of receipt.
- -20°C or -80°C for 2 weeks under sterile conditions after reconstitution.

Avoid repeated freeze/thaw cycles.

Shipping

The product is shipped with polar packs. Upon receipt, store it immediately at -20°C or lower for long term storage.

Image

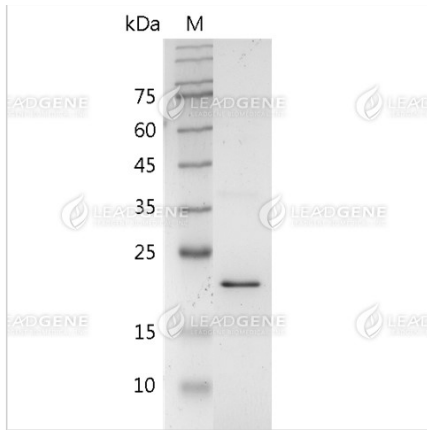
Tainan Headquarter

+886-6-2536677 +886-6-2531536

info@leadgene.com.tw

Taipei Office

+886-2-27065528



SDS-PAGE analysis of
recombinant human TL1A.

Disclaimer : For Research Use or Further Manufacturing Only.

Tainan Headquarter

+886-6-2536677 +886-6-2531536

info@leadgene.com.tw

Taipei Office

+886-2-27065528