

Human TRAIL, His Tag, E. coli

Catalog Number	LDG121PHE
Package	5 µg / 20 µg / 100 µg / Customized package

For full product information, images and publications, please visit [our website](#).



Specifications

Species of Origin

Human

Affinity Tag

His Tag (C-term)

Purity

>98% as determined by SDS-PAGE analysis.

Activity

Measure by its ability to induce cytotoxicity in L929 cells in the presence of actinomycin D. The ED₅₀ for this effect is 10.4-15.4 ng/mL.

Form

Lyophilized

Expression System

Escherichia coli

Storage Buffer

Lyophilized from a 0.2 µm filtered solution of PBS, pH 8.0.

Molecular weight

The protein has a calculated MW of 20.33 kDa. The protein migrates as 18 kDa under reducing condition (SDS-PAGE analysis).

Endotoxin Level

<0.1 EU per 1 µg of the protein by the LAL method.

Background

Tainan Headquarters

+886-6-2536677

bd@leadgene.com.tw

Innovation & Research Center

+886-2-27065528

CLD Center

+886-6-2536677

Background

Tumor necrosis factor-associated apoptosis-inducing ligand (TRAIL) is a type II membrane protein of the tumor necrosis factor (TNF) family members, moreover, expressed in many adult tissues including the thymus, prostate, colon, ovary and lung. TRAIL is a 19kDa protein containing 281 residues. TRAIL to induce apoptosis in human breast carcinoma cells (MCF7) and human epitheloid carcinoma (HeLa) cell lines, by activate two death receptors of DR4 and DR5 or two decoy receptors DcR1 and DcR2.

Uniprot ID

#P50591

Synonyms

TNF-related apoptosis-inducing ligand , TRAIL, Apo-2 ligand, Apo-2L, CD253, Tumor necrosis factor ligand superfamily member 10, TNFL10

Sequence Note

Arg114-Gly281

Instruction

Reconstitution

It is recommended to reconstitute the lyophilized protein in sterile H₂O to a concentration of 200 µg/mL and incubate the stock solution for at least 20 min to ensure sufficient re-dissolved.

Stability & Storage

This product is stable after storage at:

- -20°C for 12 months in lyophilized state from date of receipt.
- -20°C or -80°C for 1 month under sterile conditions after reconstitution.

Avoid repeated freeze/thaw cycles.

Shipping

The product is shipped with polar packs. Upon receipt, store it immediately at -20°C or lower for long term storage.

Image

Tainan Headquarters

+886-6-2536677

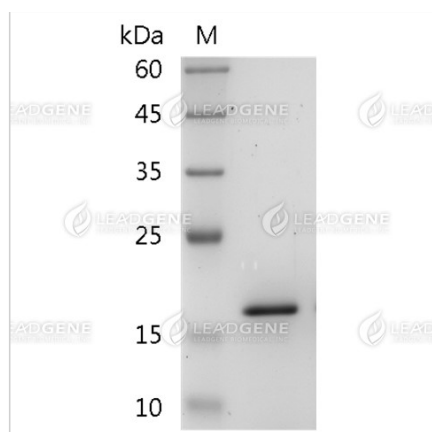
bd@leadgene.com.tw

Innovation & Research Center

+886-2-27065528

CLD Center

+886-6-2536677



SDS-PAGE analysis of recombinant human TRAIL.

Disclaimer : For Research Use or Further Manufacturing Only.