

## Human CD30L, His Tag, E. coli

<b>Catalog Number</b>	LDG119PHE
<b>Package</b>	5 µg / 20 µg / 100 µg / Customized package

For full product information, images and publications, please visit [our website](#).



### Specifications

#### Species of Origin

Human

#### Affinity Tag

His Tag (C-term)

#### Purity

>98% as determined by SDS-PAGE analysis.

#### Activity

Measure by its ability to induce IL-8 secretion in human PBMCs using a concentration range of 10 - 100 ng/mL.  
 Note: Results may vary from different PBMC donors.

#### Form

Lyophilized

#### Expression System

Escherichia coli

#### Storage Buffer

Lyophilized from a 0.2 µm filtered solution of PBS, pH 7.4.

#### Molecular weight

The protein has a calculated MW of 20.57 kDa.  
 The protein migrates as 18 kDa under reducing condition (SDS-PAGE analysis).

#### Endotoxin Level

<0.1 EU per 1 µg of the protein by the LAL method.

### Background

#### Tainan Headquarters

+886-6-2536677

bd@leadgene.com.tw

#### Innovation & Research Center

+886-2-27065528

#### CLD Center

+886-6-2536677

### Background

Human CD30L is also named for CD153 and TNFSF8 which is one member of TNF family. Human CD30L is expressed on T cells. It binds the CD30, which is on some lymphoma cell lines. Human CD30L is a 30 kDa cytokine with 171 amino acid residues which is a transmembrane glycoprotein. Human CD30L plays an important role in the regulation of cell proliferation, activation and apoptosis. Human CD30L is a good target of cell therapy in inflammatory diseases.

### Uniprot ID

#P32971

### Synonyms

CD30 ligand , CD30L, Tumor necrosis factor ligand superfamily member 8

### Sequence Note

Gln63-Asp234

## Instruction

### Reconstitution

It is recommended to reconstitute the lyophilized protein in sterile H<sub>2</sub>O to a concentration of 200 µg/mL and incubate the stock solution for at least 20 min to ensure sufficient re-dissolved.

### Stability & Storage

This product is stable after storage at:

- -20°C for 12 months in lyophilized state from date of receipt.
- -20°C or -80°C for 1 month under sterile conditions after reconstitution.

Avoid repeated freeze/thaw cycles.

### Shipping

The product is shipped with polar packs. Upon receipt, store it immediately at -20°C or lower for long term storage.

## Image

### Tainan Headquarters

+886-6-2536677

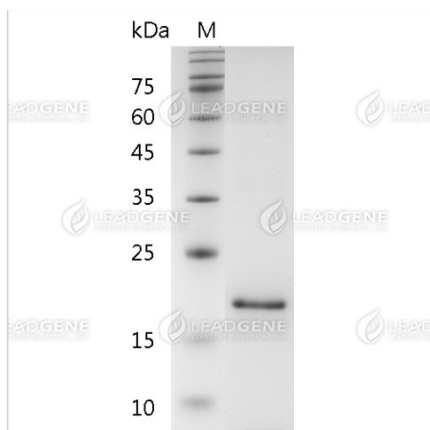
✉ [bd@leadgene.com.tw](mailto:bd@leadgene.com.tw)

### Innovation & Research Center

+886-2-27065528

### CLD Center

+886-6-2536677



SDS-PAGE analysis of recombinant human CD30L.

**Disclaimer :** For Research Use or Further Manufacturing Only.