

Human CD27L, His Tag, E. coli

Catalog Number	LDG118PHE
Package	5 µg / 20 µg / 100 µg / Customized package

For full product information, images and publications, please visit [our website](#).



Specifications

Species of Origin

Human

Affinity Tag

His Tag (N-term)

Purity

>98% as determined by SDS-PAGE analysis.

Activity

Measure by its ability to induce IL-8 secretion in human PBMCs. The ED₅₀ for this effect is <0.6 ng/mL.

Form

Lyophilized

Expression System

Escherichia coli

Storage Buffer

Lyophilized from a 0.2 µm filtered solution of PBS, pH 8.0.

Molecular weight

The protein has a calculated MW of 18.08 kDa. The protein migrates as 18 kDa under reducing condition (SDS-PAGE analysis).

Endotoxin Level

<0.1 EU per 1 µg of the protein by the LAL method.

Background

Tainan Headquarters

+886-6-2536677

bd@leadgene.com.tw

Innovation & Research Center

+886-2-27065528

CLD Center

+886-6-2536677

Background

Human CD27L is also named for CD70 which is one member of TNF family. Human CD27L is expressed on T and B lymphocytes and mature DCs. It binds the CD27, which is on the antigen-presenting cells. Human CD27L is a 23 kDa cytokine with 154 amino acid residues which is a transmembrane glycoprotein. Human CD27L plays an important role in the regulation of T cell proliferation which is also a good target of cancer immunotherapy.

Uniprot ID

#P32970

Synonyms

CD27 ligand , CD27L, Tumor necrosis factor ligand superfamily member 7

Sequence Note

Gln39-Pro193

Instruction

Reconstitution

It is recommended to reconstitute the lyophilized protein in sterile H₂O to a concentration of 200 µg/mL and incubate the stock solution for at least 20 min to ensure sufficient re-dissolved.

Stability & Storage

This product is stable after storage at:

- -20°C for 12 months in lyophilized state from date of receipt.
- -20°C or -80°C for 1 month under sterile conditions after reconstitution.

Avoid repeated freeze/thaw cycles.

Shipping

The product is shipped with polar packs. Upon receipt, store it immediately at -20°C or lower for long term storage.

Image

Tainan Headquarters

+886-6-2536677

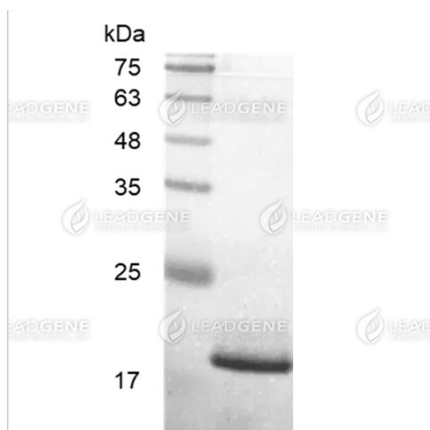
bd@leadgene.com.tw

Innovation & Research Center

+886-2-27065528

CLD Center

+886-6-2536677



SDS-PAGE analysis of recombinant human CD27L.

Disclaimer : For Research Use or Further Manufacturing Only.