

Human FGFR1, His Tag, CHO

Catalog Number	LDG112PHM
Package	5 µg / 20 µg / 100 µg / Customized package

For full product information, images and publications, please visit [our website](#).



Specifications

Species of Origin

Human

Affinity Tag

His Tag (C-term)

Purity

>95% as determined by SDS-PAGE analysis.

Endotoxin Level

<0.1 EU per 1 µg of the protein by the LAL method.

Form

Lyophilized

Expression System

CHO

Storage Buffer

Lyophilized from a 0.2 µm filtered solution of PBS, pH 7.4.

Molecular weight

The protein has a calculated 40.19 MW of kDa. The protein migrates as 50~75 kDa under reducing condition (SDS-PAGE analysis).

Mycoplasma

Not detected

Background

Background

FGFR1 regulates cell proliferation, differentiation, and survival. Dysregulation of FGFR1 is linked to cancers and developmental disorders, making it a target for cancer therapies.

Synonyms

Fibroblast growth factor receptor 1, FGFR-1, EC:2.7.10.1, Basic fibroblast growth factor receptor 1, BFGFR, bFGF-R-1, Fms-like tyrosine kinase 2, FLT-2, N-sam, Proto-oncogene c-Fgr, CD331

Tainan Headquarters

+886-6-2536677

✉ bd@leadgene.com.tw

Innovation & Research Center

+886-2-27065528

CLD Center

+886-6-2536677

Uniprot ID

P11362-7

Sequence Note

Arg 22-Ile 376

Instruction
Reconstitution

It is recommended to reconstitute the lyophilized protein in sterile H₂O to a concentration not less than 200 µg/mL and incubate the stock solution for at least 20 min to ensure sufficient re-dissolved.

Stability & Storage

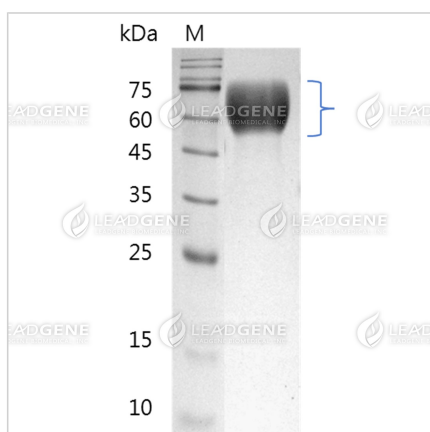
This product is stable after storage at:

- -20°C for 12 months in lyophilized state from date of receipt.
- -20°C or -80°C for 1 month under sterile conditions after reconstitution.

Avoid repeated freeze/thaw cycles.


Shipping

The product is shipped with polar packs. Upon receipt, store it immediately at -20°C or lower for long term storage.


Image



SDS-PAGE analysis of recombinant human FGFR1.

Disclaimer : For Research Use or Further Manufacturing Only.

Tainan Headquarters
 +886-6-2536677

 bd@leadgene.com.tw

Innovation & Research Center
 +886-2-27065528

CLD Center
 +886-6-2536677

Tainan Headquarters

☎ +886-6-2536677

✉ bd@leadgene.com.tw

Innovation & Research Center

☎ +886-2-27065528

CLD Center

☎ +886-6-2536677