

## Human BMP-12, His Tag, E. coli

Catalog Number	LDG110PHE
Package	5 µg / 20 µg / 100 µg / Customized package

For full product information, images and publications, please visit [our website](#).



### Specifications

#### Species of Origin

Human

#### Affinity Tag

His Tag (C-term)

#### Purity

>98% as determined by SDS-PAGE analysis.

#### Activity

Measure by its ability to induce alkaline phosphatase production by ATDC5 cells. The ED<sub>50</sub> for this effect is < 2 µg/mL.

#### Form

Lyophilized

#### Expression System

Escherichia coli

#### Storage Buffer

Lyophilized from a 0.2 µm filtered solution containing 20 mM sodium citrate and 0.2 M NaCl, pH 4.5.

#### Molecular weight

The protein has a calculated MW of 14.95 kDa. The protein migrates as 17 kDa under reducing condition (SDS-PAGE analysis).

#### Endotoxin Level

<0.1 EU per 1 µg of the protein by the LAL method.

### Background

### Background

Bone Morphogenetic Protein-12 (BMP-12), known as Growth differentiation factor 7 (GDF7), is an extracellular multifunctional cytokine that is also a member of the TGF $\beta$  family. BMP-12 can bind with the TGF $\beta$  receptor and trigger SMAD protein signal transduction. BMP-12 is in a signaling center called the roof plate in the embryo's developing nervous system, where it sends signals to induce the generation of sensory neurons.

### Uniprot ID

#Q7Z4P5

### Synonyms

Growth/differentiation factor 7

### Sequence Note

Lys352-Arg450

## Instruction

### Reconstitution

It is recommended to reconstitute the lyophilized protein in 4 mM HCl to a concentration not less than 200  $\mu$ g/mL and incubate the stock solution for at least 20 min to ensure sufficient re-dissolved.

### Stability & Storage

This product is stable after storage at:

- -20°C for 12 months in lyophilized state from date of receipt.
- -20°C or -80°C for 1 month under sterile conditions after reconstitution.

Avoid repeated freeze/thaw cycles.

### Shipping

The product is shipped with polar packs. Upon receipt, store it immediately at -20°C or lower for long term storage.

## Image

### Tainan Headquarters

+886-6-2536677

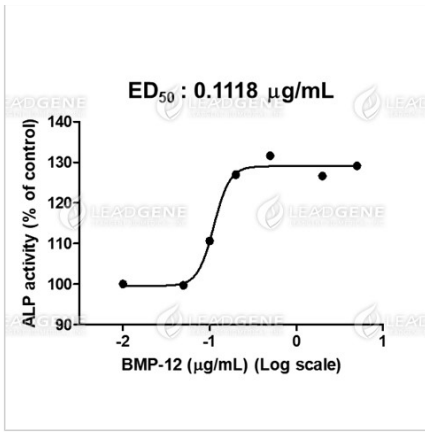
bd@leadgene.com.tw

### Innovation & Research Center

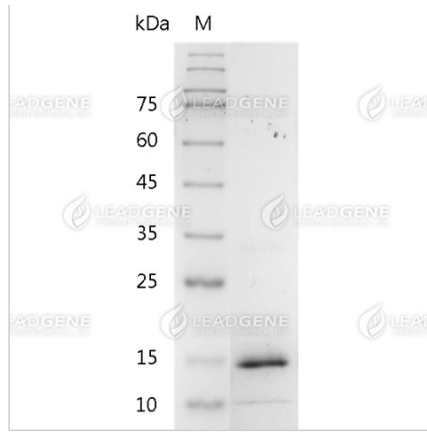
+886-2-27065528

### CLD Center

+886-6-2536677



Human BMP-12, His Tag, E. coli (LDG110PHE) induced alkaline phosphatase production by ATDC5 cells, with the ED<sub>50</sub> at 111.8 ng/mL.



SDS-PAGE analysis of recombinant human BMP-12.

**Disclaimer** : For Research Use or Further Manufacturing Only.