

Human BMP-11, His Tag, E. coli

Catalog Number	LDG109PHE
Package	5 µg / 20 µg / 100 µg / Customized package

For full product information, images and publications, please visit [our website](#).



Specifications

Species of Origin

Human

Affinity Tag

His Tag (C-term)

Purity

>98% as determined by SDS-PAGE analysis.

Activity

Measure by its ability to induce alkaline phosphatase production by ATDC5 cells. The ED₅₀ for this effect is <11 ng/mL. Measure by its ability to induce hemoglobin expression in K562 cells. The ED₅₀ for this effect is <4 ng/mL.

Form

Lyophilized

Expression System

Escherichia coli

Storage Buffer

Lyophilized from a 0.2 µm filtered solution of PBS, pH 7.4.

Molecular weight

The protein has a calculated MW of 13.40 kDa. The protein migrates as 16 kDa under reducing condition (SDS-PAGE analysis).

Endotoxin Level

<0.1 EU per 1 µg of the protein by the LAL method.

Background

Tainan Headquarters

+886-6-2536677

bd@leadgene.com.tw

Innovation & Research Center

+886-2-27065528

CLD Center

+886-6-2536677

Background

Bone Morphogenetic Protein-11 (BMP-11), known as Growth differentiation factor 11 (GDF11), is an extracellular multifunctional signaling cytokine that is also a member of the TGF β family. BMP-11 can bind with the TGF β receptor and is involved in SMAD protein signal transduction. Moreover, it promotes the formation of blood vessels and nerves that can control anterior-posterior patterning.

Uniprot ID

#O95390

Synonyms

Bone morphogenetic protein 11, Growth/differentiation factor 11

Sequence Note

Asn299-Ser407

Instruction

Reconstitution

It is recommended to reconstitute the lyophilized protein in 4 mM HCl to a concentration of 200 μ g/mL and incubate the stock solution for at least 20 min to ensure sufficient re-dissolved.

Stability & Storage

This product is stable after storage at:

- -20°C for 12 months in lyophilized state from date of receipt.
- -20°C or -80°C for 1 month under sterile conditions after reconstitution.

Avoid repeated freeze/thaw cycles.

Shipping

The product is shipped with polar packs. Upon receipt, store it immediately at -20°C or lower for long term storage.

Image

Tainan Headquarters

+886-6-2536677

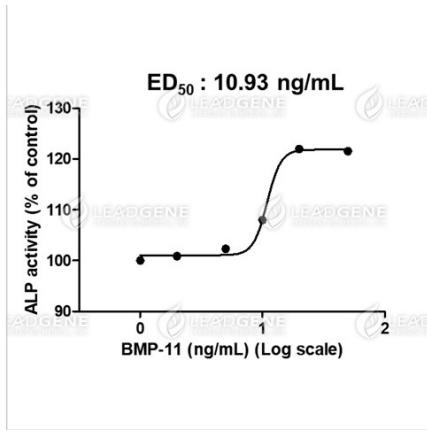
✉ bd@leadgene.com.tw

Innovation & Research Center

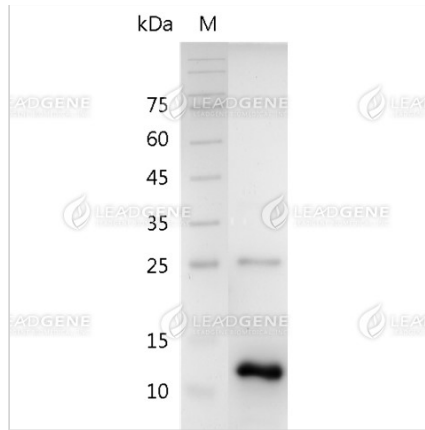
+886-2-27065528

CLD Center

+886-6-2536677



Human BMP-11, His Tag, E. coli (LDG109PHE) induced alkaline phosphatase production by ATDC5 cells, with the ED₅₀ at 10.93 ng/mL.



SDS-PAGE analysis of recombinant human BMP-11.

Disclaimer : For Research Use or Further Manufacturing Only.