

## Human BMP-10, His Tag, E. coli

<b>Catalog Number</b>	LDG108PHE
<b>Package</b>	5 µg / 20 µg / 100 µg / Customized package

For full product information, images and publications, please visit [our website](#).



### Specifications

#### Species of Origin

Human

#### Affinity Tag

His Tag (C-term)

#### Purity

>98% as determined by SDS-PAGE analysis.

#### Activity

Measure by its ability to induce alkaline phosphatase production by ATDC5 cells. The ED<sub>50</sub> for this effect is 1.7-2.1 ng/mL.

#### Form

Lyophilized

#### Expression System

Escherichia coli

#### Storage Buffer

Lyophilized from a 0.2 µm filtered solution containing 20 mM sodium citrate and 0.2 M NaCl, pH 3.5.

#### Molecular weight

The protein has a calculated MW of 13.10 kDa. The protein migrates as 16 kDa under reducing condition (SDS-PAGE analysis).

#### Endotoxin Level

<0.1 EU per 1 µg of the protein by the LAL method.

### Background

#### Tainan Headquarters

+886-6-2536677

bd@leadgene.com.tw

#### Innovation & Research Center

+886-2-27065528

#### CLD Center

+886-6-2536677

### Background

Bone Morphogenetic Protein-10 (BMP-10) is an extracellular multifunctional signaling cytokine that is also a member of the TGF $\beta$  family. BMP-10 can bind with TGF $\beta$  receptor and is involved in SMAD protein signal transduction. The functions related to bone generation can induce bone and cartilage formation. Different from other family members, BMP-10 is a novel protein involved in the heart's trabeculation.

### Uniprot ID

#O95393

### Synonyms

Bone morphogenetic protein 10

### Sequence Note

Asn317-Arg424

## Instruction

### Reconstitution

It is recommended to reconstitute the lyophilized protein in 4 mM HCl to a concentration of 200  $\mu$ g/mL and incubate the stock solution for at least 20 min to ensure sufficient re-dissolved.

### Stability & Storage

This product is stable after storage at:

- -20°C for 12 months in lyophilized state from date of receipt.
- -20°C or -80°C for 1 month under sterile conditions after reconstitution.

Avoid repeated freeze/thaw cycles.

### Shipping

The product is shipped with polar packs. Upon receipt, store it immediately at -20°C or lower for long term storage.

## Image

### Tainan Headquarters

+886-6-2536677

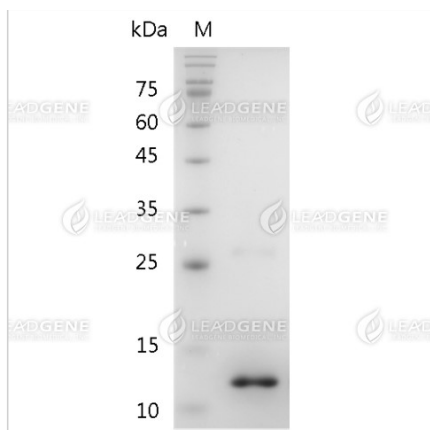
✉ [bd@leadgene.com.tw](mailto:bd@leadgene.com.tw)

### Innovation & Research Center

+886-2-27065528

### CLD Center

+886-6-2536677



SDS-PAGE analysis of recombinant human BMP-10.

**Disclaimer :** For Research Use or Further Manufacturing Only.