

Human BMP-8a, His Tag, E. coli

Catalog Number	LDG105PHE
Package	5 µg / 20 µg / 100 µg / Customized package

For full product information, images and publications, please visit [our website](#).



Specifications

Species of Origin

Human

Affinity Tag

His Tag (C-term)

Purity

>98% as determined by SDS-PAGE analysis.

Activity

Measure by its ability to induce alkaline phosphatase production by ATDC5 cells. The ED₅₀ for this effect is 10-19.4 ng/mL.

Form

Lyophilized

Expression System

Escherichia coli

Storage Buffer

Lyophilized from a 0.2 µm filtered solution containing 20 mM sodium citrate and 0.2 M NaCl, pH 4.5.

Molecular weight

The protein has a calculated MW of 16.61 kDa. The protein migrates as 17 kDa under reducing condition (SDS-PAGE analysis).

Endotoxin Level

<0.1 EU per 1 µg of the protein by the LAL method.

Background

Tainan Headquarters

+886-6-2536677

bd@leadgene.com.tw

Innovation & Research Center

+886-2-27065528

CLD Center

+886-6-2536677

Background

Bone Morphogenetic Protein-8 (BMP-8) is an extracellular multifunctional cytokine that is also a member of the TGF- β family. BMP-8 can bind with TGF- β receptor and is involved in SMAD protein signal transduction. In addition, BMP-8 participates in the downregulation of insulin secretion that lets the heat stabilize. Moreover, it participates in ossification and is essential to cartilage and hard bone development.

Uniprot ID

#Q7Z5Y6

Synonyms

Bone morphogenetic protein 8A

Sequence Note

Ala264-His402

Instruction

Reconstitution

It is recommended to reconstitute the lyophilized protein in 4 mM HCl to a concentration of 200 μ g/mL and incubate the stock solution for at least 20 min to ensure sufficient re-dissolved.

Stability & Storage

This product is stable after storage at:

- -20°C for 12 months in lyophilized state from date of receipt.
- -20°C or -80°C for 1 month under sterile conditions after reconstitution.

Avoid repeated freeze/thaw cycles.

Shipping

The product is shipped with polar packs. Upon receipt, store it immediately at -20°C or lower for long term storage.

Image

Tainan Headquarters

+886-6-2536677

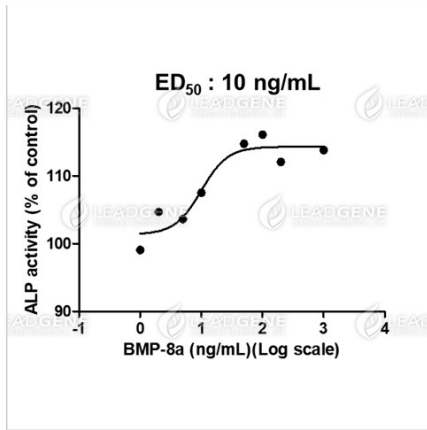
✉ bd@leadgene.com.tw

Innovation & Research Center

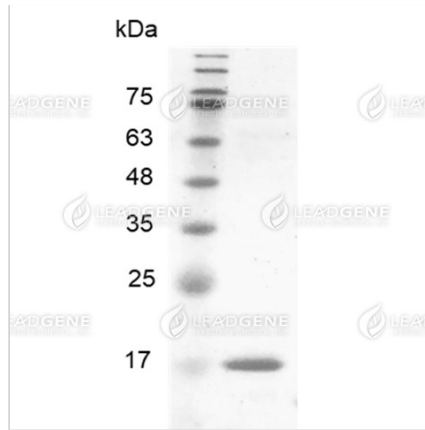
+886-2-27065528

CLD Center

+886-6-2536677



Human BMP-8a, His Tag, E. coli (LDG105PHE) induced alkaline phosphatase production by ATDC5 cells, with the ED₅₀ at 10 ng/mL.



SDS-PAGE analysis of recombinant human BMP-8a.

Disclaimer : For Research Use or Further Manufacturing Only.