

Human CD123, His Tag, CHO

Catalog Number	LDG104PHM
Package	5 µg / 20 µg / 100 µg / Customized package

For full product information, images and publications, please visit [our website](#).



Specifications

Species of Origin

Human

Expression System

CHO

Affinity Tag

His Tag (C-term)

Storage Buffer

Lyophilized from a 0.2 µm filtered solution of PBS, pH 7.4.

Purity

>90% as determined by SDS-PAGE analysis.

Molecular weight

The protein has a calculated 33.91 MW of kDa. The protein migrates as 45-65 kDa under reducing condition (SDS-PAGE analysis).

Endotoxin Level

<0.1 EU per 1 µg of the protein by the LAL method.

Mycoplasma

Not detected

Form

Lyophilized

Background

Background

CD123, the alpha chain of the IL-3 receptor, is overexpressed in acute myeloid leukemia (AML). Targeting CD123 has shown promise in immunotherapies for hematologic malignancies.

Synonyms

Translation initiation factor eIF2 assembly protein, Cell division cycle protein 123 homolog, Protein D123, HT-1080, PZ32

Tainan Headquarters

+886-6-2536677

bd@leadgene.com.tw

Innovation & Research Center

+886-2-27065528

CLD Center

+886-6-2536677

Uniprot ID

P26951

Sequence Note

Thr19-Arg305

Instruction
Reconstitution

It is recommended to reconstitute the lyophilized protein in sterile H₂O to a concentration not less than 200 µg/mL and incubate the stock solution for at least 20 min to ensure sufficient re-dissolved.

Stability & Storage

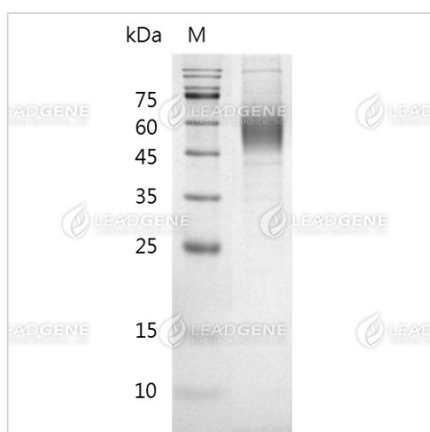
This product is stable after storage at:

- -20°C for 12 months in lyophilized state from date of receipt.
- -20°C or -80°C for 1 month under sterile conditions after reconstitution.

Avoid repeated freeze/thaw cycles.


Shipping

The product is shipped with polar packs. Upon receipt, store it immediately at -20°C or lower for long term storage.


Image



SDS-PAGE analysis of recombinant human CD123.

Disclaimer : For Research Use or Further Manufacturing Only.

Tainan Headquarters
 +886-6-2536677

 bd@leadgene.com.tw

Innovation & Research Center
 +886-2-27065528

CLD Center
 +886-6-2536677

Tainan Headquarters

☎ +886-6-2536677

✉ bd@leadgene.com.tw

Innovation & Research Center

☎ +886-2-27065528

CLD Center

☎ +886-6-2536677