

## Human IFN Omega, His Tag, E. coli

Catalog Number	LDG098PHE
Package	5 µg / 20 µg / 100 µg / Customized package

For full product information, images and publications, please visit [our website](#).



### Specifications

#### Species of Origin

Human

#### Expression System

Escherichia coli

#### Affinity Tag

His Tag (C-term)

#### Storage Buffer

Lyophilized from a 0.2 µm filtered solution of PBS, pH 7.4.

#### Purity

>95% as determined by SDS-PAGE analysis.

#### Molecular weight

The protein has a calculated MW of 20.93 kDa. The protein migrates as 15-20 kDa under reducing condition (SDS-PAGE analysis).

#### Activity

Measure by its ability to induce cytotoxicity in TF-1 cells. The ED<sub>50</sub> for this effect is <0.02 ng/mL. The specific activity of recombinant human IFN omega is approximately >5 x10<sup>7</sup> IU/ mg.

#### Endotoxin Level

<0.1 EU per 1 µg of the protein by the LAL method.

#### Form

Lyophilized

### Background

#### Tainan Headquarters

+886-6-2536677

bd@leadgene.com.tw

#### Innovation & Research Center

+886-2-27065528

#### CLD Center

+886-6-2536677

### Background

Interferon Omega (IFN- $\omega$ ) is a 20.12 kDa member of type I IFN family with 173 amino acid residues. IL-28B is expressed by epithelial tissues. IFN- $\omega$  with antiviral, antitumor activity and regulating the innate immune response. Able to activate P13K/Akt signaling pathway via binding its receptor IFNAR in cells.

### Uniprot ID

#P05000

### Synonyms

Interferon alpha-II-1, Interferon omega-1

### Sequence Note

Cys24-Ser195

## Instruction

### Reconstitution

It is recommended to reconstitute the lyophilized protein in sterile H<sub>2</sub>O to a concentration of 200  $\mu$ g/mL and incubate the stock solution for at least 20 min to ensure sufficient re-dissolved.

### Stability & Storage

This product is stable after storage at:

- -20°C for 12 months in lyophilized state from date of receipt.
- -20°C or -80°C for 1 month under sterile conditions after reconstitution.

Avoid repeated freeze/thaw cycles.

### Shipping

The product is shipped with polar packs. Upon receipt, store it immediately at -20°C or lower for long term storage.

## Image

### Tainan Headquarters

+886-6-2536677

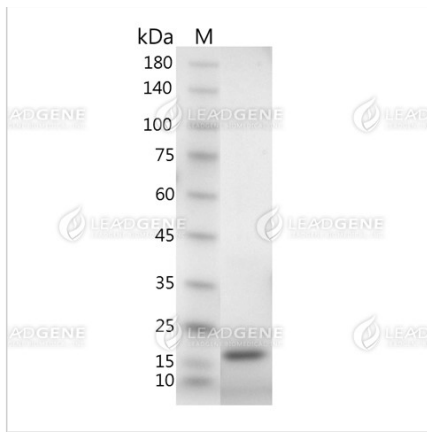
bd@leadgene.com.tw

### Innovation & Research Center

+886-2-27065528

### CLD Center

+886-6-2536677



SDS-PAGE analysis of recombinant human IFN omega.

**Disclaimer :** For Research Use or Further Manufacturing Only.