

Human IL-17D, His Tag, E. coli

Catalog Number	LDG096PHE
Package	5 µg / 20 µg / 100 µg / Customized package

For full product information, images and publications, please visit [our website](#).



Specifications

Species of Origin

Human

Affinity Tag

His Tag (N-term)

Purity

>98% as determined by SDS-PAGE analysis.

Endotoxin Level

<0.1 EU per 1 µg of the protein by the LAL method.

Expression System

Escherichia coli

Storage Buffer

Lyophilized from a 0.2 µm filtered solution of PBS, pH 8.0.

Molecular weight

The protein has a calculated MW of 21.00 kDa. The protein migrates as 17-34 kDa under reducing condition (SDS-PAGE analysis).

Form

Lyophilized

Background

Background

Interleukin 17D (IL-17D) is a 20.2 kDa member of IL-17 family with 185 amino acid residues. IL-17D is expressed by skeletal muscle, brain, adipose tissue, heart, lung, pancreas and secreted to blood. IL-17D can stimulate the production of cytokines such as IL-6, IL-8, GM-CSF, and stimulate local infiltration and proliferation of leukocytes.

Synonyms

Interleukin-17D, IL-17D, Interleukin-27, IL17D, Interleukin27

Tainan Headquarters

+886-6-2536677

bd@leadgene.com.tw

Innovation & Research Center

+886-2-27065528

CLD Center

+886-6-2536677

Uniprot ID

#Q8TAD2

Sequence Note

Ala18-Pro202

Instruction
Reconstitution

It is recommended to reconstitute the lyophilized protein in sterile H₂O to a concentration of 200 µg/mL and incubate the stock solution for at least 20 min to ensure sufficient re-dissolved.

Stability & Storage

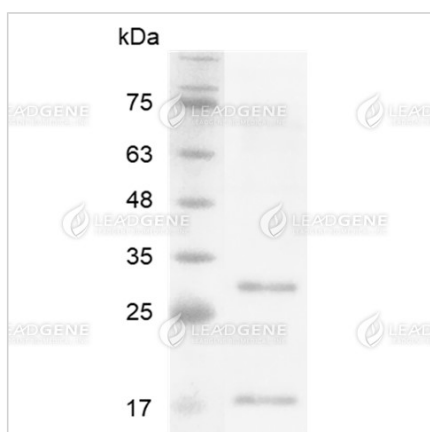
This product is stable after storage at:

- -20°C for 12 months in lyophilized state from date of receipt.
- -20°C or -80°C for 2 weeks under sterile conditions after reconstitution.

Avoid repeated freeze/thaw cycles.

Shipping

The product is shipped with polar packs. Upon receipt, store it immediately at -20°C or lower for long term storage.

Image


SDS-PAGE analysis of recombinant human IL-17D.

Disclaimer : For Research Use or Further Manufacturing Only.

Tainan Headquarters

+886-6-2536677

bd@leadgene.com.tw

Innovation & Research Center

+886-2-27065528

CLD Center

+886-6-2536677

Tainan Headquarters

☎ +886-6-2536677

✉ bd@leadgene.com.tw

Innovation & Research Center

☎ +886-2-27065528

CLD Center

☎ +886-6-2536677