

Human IL-1RA, His Tag, E. coli

Catalog Number	LDG094PHE
Package	5 µg / 20 µg / 100 µg / Customized package

For full product information, images and publications, please visit [our website](#).



Specifications

Species of Origin

Human

Affinity Tag

His Tag (C-term)

Purity

>98% as determined by SDS-PAGE analysis.

Activity

Measure by its ability to inhibit IL-1 alpha -dependent proliferation in D10.G4.1 cells. The ED₅₀ for this effect is <50 ng/mL.

Form

Lyophilized

Expression System

Escherichia coli

Storage Buffer

Lyophilized from a 0.2 µm filtered solution of PBS, pH 7.4.

Molecular weight

The protein has a calculated MW of 18.07 kDa. The protein migrates as 19 kDa under reducing condition (SDS-PAGE analysis).

Endotoxin Level

<0.1 EU per 1 µg of the protein by the LAL method.

Background

Tainan Headquarters

+886-6-2536677

bd@leadgene.com.tw

Innovation & Research Center

+886-2-27065528

CLD Center

+886-6-2536677

Background

Interleukin 1 receptor antagonist (IL-1RA) is a 17.26 kDa member of IL-1 family with 153 amino acid residues. IL-1RA is expressed by peripheral blood cells, lungs, spleen, liver and is secreted from monocytes, macrophages, neutrophils, and other cells. Inhibits the activity of interleukin-1 by binding to receptor IL1R1. IL-1RA can modulate a variety of interleukin-1 related immune and inflammatory responses, particularly in the acute phase of infection and inflammation.

Uniprot ID

#P18510

Synonyms

ICIL-1RA, IL1 inhibitor, Interleukin-1 receptor antagonist protein

Sequence Note

Arg26-Glu177

Instruction

Reconstitution

It is recommended to reconstitute the lyophilized protein in sterile H₂O to a concentration not less than 200 µg/mL and incubate the stock solution for at least 20 min to ensure sufficient re-dissolved.

Stability & Storage

This product is stable after storage at:

- -20°C for 12 months in lyophilized state from date of receipt.
- -20°C or -80°C for 1 month under sterile conditions after reconstitution.

Avoid repeated freeze/thaw cycles.

Shipping

The product is shipped with polar packs. Upon receipt, store it immediately at -20°C or lower for long term storage.

Image

Tainan Headquarters

+886-6-2536677

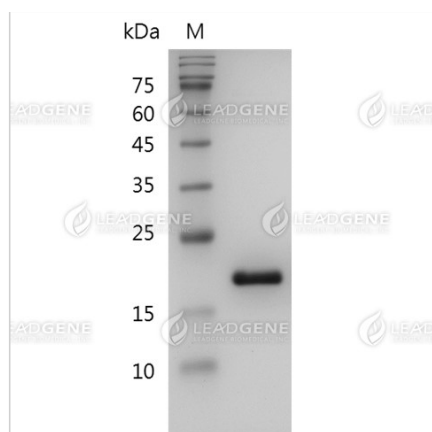
bd@leadgene.com.tw

Innovation & Research Center

+886-2-27065528

CLD Center

+886-6-2536677



SDS-PAGE analysis of recombinant human IL-1RA.

Disclaimer : For Research Use or Further Manufacturing Only.