

## Mouse Neurturin, His Tag, E. coli

Catalog Number	LDG089PME
Package	5 µg / 20 µg / 100 µg / Customized package

For full product information, images and publications, please visit [our website](#).



### Specifications

#### Species of Origin

Mouse

#### Affinity Tag

His Tag (N-term)

#### Purity

>98% as determined by SDS-PAGE analysis.

#### Activity

Measure by its ability to induce proliferation in SH-SY5Y cells. The ED<sub>50</sub> for this effect is <50 ng/mL.

#### Form

Lyophilized

#### Expression System

Escherichia coli

#### Storage Buffer

Lyophilized from a 0.2 µm filtered solution of PBS, pH 7.4.

#### Molecular weight

The protein has a calculated MW of 12.33 kDa. The protein migrates as 11-17 kDa under reducing condition (SDS-PAGE analysis).

#### Endotoxin Level

<0.1 EU per 1 µg of the protein by the LAL method.

### Background

#### Tainan Headquarters

+886-6-2536677

bd@leadgene.com.tw

#### Innovation & Research Center

+886-2-27065528

#### CLD Center

+886-6-2536677

**Background**

Neurturin is a 22 kDa cytokine with 195 amino acid residues. Neurturin belongs to the same neurotrophic factor family as GDNF. Binding to GFR $\alpha$ -2 (GPI-linked receptor termed GDNF family receptor  $\alpha$ -2), neurturin activates Ret receptor tyrosine kinase and MAPK pathway. It involves in neuron survival.

**Uniprot ID**

#P97463

**Synonyms**

Neurturin

**Sequence Note**

Cys101-Val195

**Instruction****Reconstitution**

It is recommended to reconstitute the lyophilized protein in sterile H<sub>2</sub>O to a concentration of 200  $\mu$ g/mL and incubate the stock solution for at least 20 min to ensure sufficient re-dissolved.

**Stability & Storage**

This product is stable after storage at:

- -20°C for 12 months in lyophilized state from date of receipt.
- -20°C or -80°C for 1 month under sterile conditions after reconstitution.

Avoid repeated freeze/thaw cycles.

**Shipping**

The product is shipped with polar packs. Upon receipt, store it immediately at -20°C or lower for long term storage.

**Image****Tainan Headquarters**

+886-6-2536677

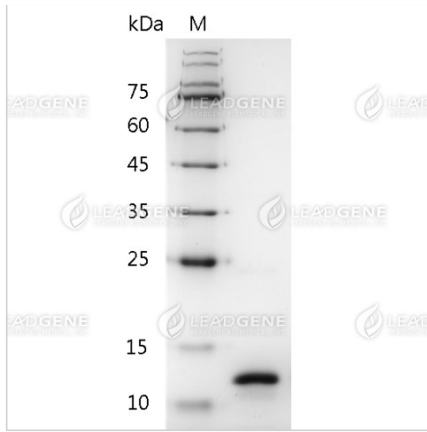
bd@leadgene.com.tw

**Innovation & Research Center**

+886-2-27065528

**CLD Center**

+886-6-2536677



SDS-PAGE analysis of recombinant mouse Neurturin.

**Disclaimer :** For Research Use or Further Manufacturing Only.