

Human IGF-I, His Tag, E. coli

Catalog Number	LDG088PHE
Package	5 µg / 20 µg / 100 µg / Customized package

For full product information, images and publications, please visit [our website](#).



Specifications

Species of Origin

Human

Expression System

Escherichia coli

Affinity Tag

His Tag (C-term)

Storage Buffer

Lyophilized from a 0.2 µm filtered solution of PBS, pH 7.4.

Purity

>95% as determined by SDS-PAGE analysis.

Molecular weight

The protein has a calculated MW of 8.59 kDa.
The protein migrates as 8-10 kDa under reducing condition (SDS-PAGE analysis).

Activity

Measure by its ability to induce MCF-7 cells proliferation. The ED₅₀ for this effect is 0.9-3.1 ng/mL. The specific activity of recombinant human IGF-I is approximately $>1.2 \times 10^3$ IU/mg.

Endotoxin Level

<0.01 EU per 1 µg of the protein by the LAL method.

Form

Lyophilized

Background

Tainan Headquarters

+886-6-2536677

bd@leadgene.com.tw

Innovation & Research Center

+886-2-27065528

CLD Center

+886-6-2536677

Background

Insulin like Growth Factors 1 (IGF-I) is a 7.79 kDa member of the Insulin-like Growth Factors with 71 amino acid residues. IGF-I is mainly expressed from liver, adipose tissue, Endometrial stromal cells, Leydig cells, and can be isolated from plasma. IGF-I mediating the protein anabolic and promoting effect of pituitary growth hormone. IGF-I also affects metabolism of glycogen, DNA synthesis and glucose uptake via binding to IGF-I receptor.

Uniprot ID

#P05019

Synonyms

Mechano Growth Factors, MGF, Somatomedin-C, Insulin-like Growth Factors

Sequence Note

Gly49-Ala118

Instruction

Reconstitution

It is recommended to reconstitute the lyophilized protein in sterile H₂O to a concentration not less than 200 µg/mL and incubate the stock solution for at least 20 min to ensure sufficient re-dissolved.

Stability & Storage

This product is stable after storage at:

- -20°C for 12 months in lyophilized state from date of receipt.
- -20°C or -80°C for 1 month under sterile conditions after reconstitution.

Avoid repeated freeze/thaw cycles.

Shipping

The product is shipped with polar packs. Upon receipt, store it immediately at -20°C or lower for long term storage.

Image

Tainan Headquarters

+886-6-2536677

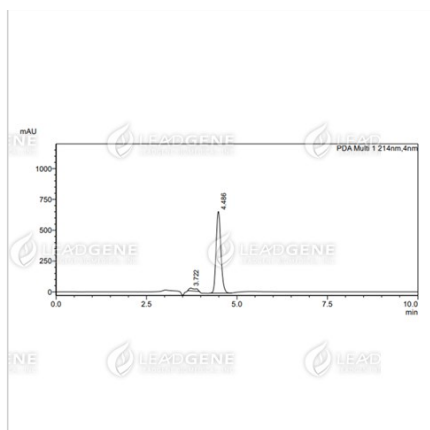
✉ bd@leadgene.com.tw

Innovation & Research Center

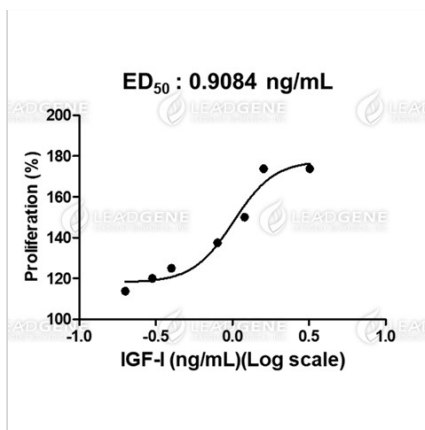
+886-2-27065528

CLD Center

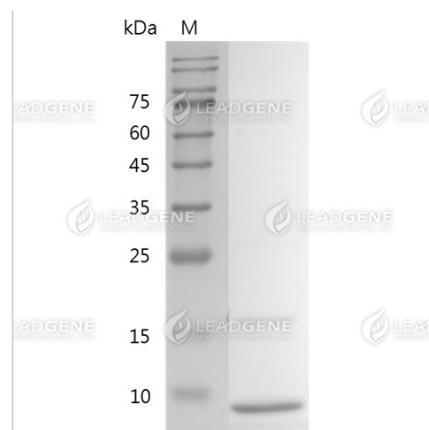
+886-6-2536677



The purity of recombinant human IGF-I is greater than 95% as determined by RP-HPLC.



Human IGF-I, His Tag, E. coli (LDG088PHE) induced MCF-7 cell proliferation, with the ED₅₀ at 0.9084 ng/mL.



SDS-PAGE analysis of recombinant human IGF-I.

Disclaimer : For Research Use or Further Manufacturing Only.