

## Mouse GDNF, His Tag, E. coli

|                |  |
|----------------|--|
| Catalog Number | LDG087PME                                  |
| Package        | 5 µg / 20 µg / 100 µg / Customized package |

For full product information, images and publications, please visit [our website](#).



### Specifications

#### Species of Origin

Mouse

#### Affinity Tag

His Tag (C-term)

#### Purity

>98% as determined by SDS-PAGE analysis.

#### Endotoxin Level

<0.1 EU per 1 µg of the protein by the LAL method.

#### Expression System

Escherichia coli

#### Storage Buffer

Lyophilized from a 0.2 µm filtered solution of PBS, pH 7.4.

#### Molecular weight

The protein has a calculated MW of 15.91 kDa.  
The protein migrates about 17 kDa under reducing condition (SDS-PAGE analysis).

#### Form

Lyophilized

### Background

#### Tainan Headquarters

+886-6-2536677

bd@leadgene.com.tw

#### Innovation & Research Center

+886-2-27065528

#### CLD Center

+886-6-2536677

### Background

Glial Cell Line-derived Neurotrophic Factor (GDNF) is the neurotrophic factor, belonging to the GDNF family of ligands (GFL) and identifying as a therapeutic candidate in Parkinson's disease.

GDNF is a 23.7 kDa protein containing 211 residues that plays a critical role in promoting the survival and differentiation of midbrain dopamine neurons. Besides, GDNF is revealed to facilitate the development of peripheral tissues such as kidney, pancreas and lung. Additionally, as a member of GFL, GDNF also takes part in the progression of tumor.

### Uniprot ID

#P48540

### Synonyms

Glial cell line-derived neurotrophic factor, mGDNF, Astrocyte-derived trophic factor, ATF

### Sequence Note

Ser78-Ile211

## Instruction

### Reconstitution

It is recommended to reconstitute the lyophilized protein in sterile H<sub>2</sub>O to a concentration of 200 µg/mL and incubate the stock solution for at least 20 min to ensure sufficient re-dissolved.

### Stability & Storage

This product is stable after storage at:

- -20°C for 12 months in lyophilized state from date of receipt.
- -20°C or -80°C for 1 month under sterile conditions after reconstitution.

Avoid repeated freeze/thaw cycles.

### Shipping

The product is shipped with polar packs. Upon receipt, store it immediately at -20°C or lower for long term storage.

## Image

### Tainan Headquarters

+886-6-2536677

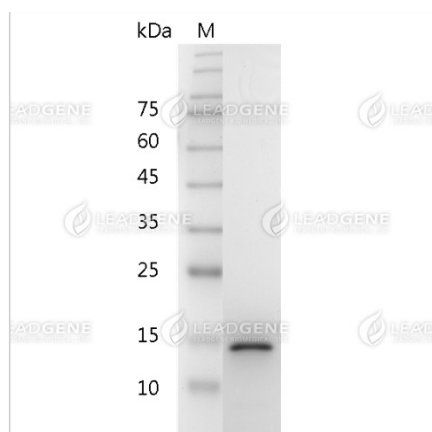
bd@leadgene.com.tw

### Innovation & Research Center

+886-2-27065528

### CLD Center

+886-6-2536677



SDS-PAGE analysis of recombinant mouse GDNF.

**Disclaimer :** For Research Use or Further Manufacturing Only.