

## Human FGF-16, His Tag, E. coli

<b>Catalog Number</b>	LDG080PHE
<b>Package</b>	5 µg / 20 µg / 100 µg / Customized package

For full product information, images and publications, please visit [our website](#).



### Specifications

#### Species of Origin

Human

#### Expression System

Escherichia coli

#### Affinity Tag

His Tag (C-term)

#### Storage Buffer

Lyophilized from a 0.2 µm filtered solution of PBS, pH 7.4.

#### Purity

>95% as determined by SDS-PAGE analysis.

#### Molecular weight

The protein has a calculated MW of 24.57 kDa. The protein migrates as 24 kDa under reducing condition (SDS-PAGE analysis).

#### Activity

Measure by its ability to induce 3T3 cells proliferation. The ED<sub>50</sub> for this effect is <31 ng/mL. The specific activity of recombinant human FGF-16 is > 3 x 10<sup>4</sup> IU/mg.

#### Endotoxin Level

<0.1 EU per 1 µg of the protein by the LAL method.

#### Form

Lyophilized

### Background

#### Tainan Headquarters

+886-6-2536677

bd@leadgene.com.tw

#### Innovation & Research Center

+886-2-27065528

#### CLD Center

+886-6-2536677

### Background

Fibroblast Growth Factors-16 (FGF-16) is a 23.8 kDa member of the fibroblast Growth Factors with 207 amino acid residues. FGF-16 is mainly expressed from melanocytes, fibroblasts. FGF-16 involved embryonic development, cell proliferation and cell differentiation, and is required for normal cardiomyocyte proliferation and heart development.

### Uniprot ID

#O43320

### Synonyms

Fibroblast Growth Factors 16

### Sequence Note

Met1-Arg207

## Instruction

### Reconstitution

It is recommended to reconstitute the lyophilized protein in sterile H<sub>2</sub>O to a concentration of 200 µg/mL and incubate the stock solution for at least 20 min to ensure sufficient re-dissolved.

### Stability & Storage

This product is stable after storage at:

- -20°C for 12 months in lyophilized state from date of receipt.
- -20°C or -80°C for 1 month under sterile conditions after reconstitution.

Avoid repeated freeze/thaw cycles.

### Shipping

The product is shipped with polar packs. Upon receipt, store it immediately at -20°C or lower for long term storage.

## Image

### Tainan Headquarters

+886-6-2536677

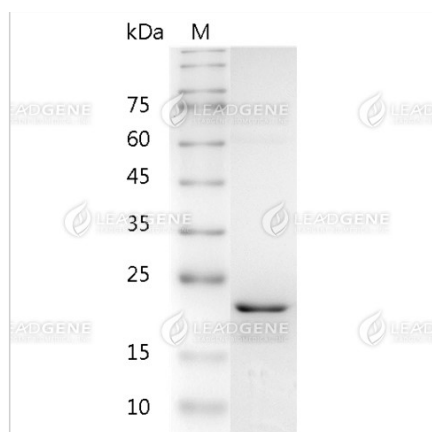
bd@leadgene.com.tw

### Innovation & Research Center

+886-2-27065528

### CLD Center

+886-6-2536677



SDS-PAGE analysis of recombinant human FGF-16.

**Disclaimer :** For Research Use or Further Manufacturing Only.