

## Mouse CD27L, His Tag, E. coli

**Catalog Number** LDG076PME

**Package** 5 µg / 20 µg / 100 µg / Customized package

For full product information, images and publications, please visit [our website](#).



### Specifications

#### Species of Origin

Mouse

#### Affinity Tag

His Tag (N-term)

#### Purity

>98% as determined by SDS-PAGE analysis.

#### Activity

Measure by its ability to induce proliferation in mouse T cells in the presence of the anti-CD3 antibody. The ED<sub>50</sub> for this effect is <4.5 µg/mL

#### Form

Lyophilized

#### Expression System

Escherichia coli

#### Storage Buffer

Lyophilized from a 0.2 µm filtered solution of PBS, pH 7.4.

#### Molecular weight

The protein has a calculated MW of 17.25 kDa. The protein migrates as 17-25 kDa under reducing condition (SDS-PAGE analysis).

#### Endotoxin Level

<0.1 EU per 1 µg of the protein by the LAL method.

### Background

#### Tainan Headquarter

+886-6-2536677 +886-6-2531536

info@leadgene.com.tw

#### Taipei Office

+886-2-27065528

### Background

CD27L is also named for CD70 which is one member of TNF family. CD27L is expressed on T and B lymphocytes and mature DCs. It binds the CD27, which is on the antigen-presenting cells. CD27L is a 19.2 kDa cytokine with 148 amino acid residues which is a transmembrane glycoprotein. CD27L plays an important role in the regulation of T cell proliferation which is also a good target of cancer immunotherapy.

### Uniprot ID

#O55237

### Synonyms

CD70 antigen, CD27 ligand, CD27-L, Tumor necrosis factor ligand superfamily member 7

### Sequence Note

Gln47-Pro195

## Instruction

### Reconstitution

It is recommended to reconstitute the lyophilized protein in sterile H<sub>2</sub>O to a concentration not less than 200 µg/mL and incubate the stock solution for at least 20 min to ensure sufficient re-dissolved.

### Stability & Storage

This product is stable after storage at:

- -20°C for 12 months in lyophilized state from date of receipt.
- -20°C or -80°C for 1 month under sterile conditions after reconstitution.

Avoid repeated freeze/thaw cycles.

### Shipping

The product is shipped with polar packs. Upon receipt, store it immediately at -20°C or lower for long term storage.

## Image

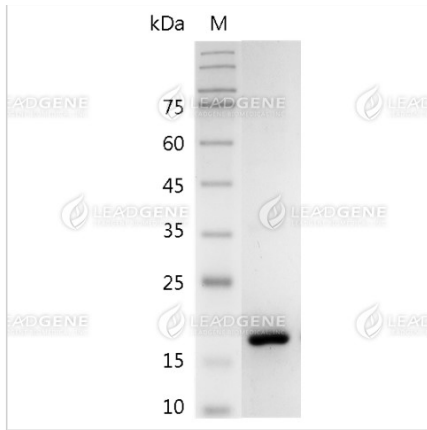
### Tainan Headquarter

+886-6-2536677 +886-6-2531536

info@leadgene.com.tw

### Taipei Office

+886-2-27065528



SDS-PAGE analysis of  
recombinant mouse CD27L.

**Disclaimer :** For Research Use or Further Manufacturing Only.

**Tainan Headquarter**

+886-6-2536677 +886-6-2531536

info@leadgene.com.tw

**Taipei Office**

+886-2-27065528