

## Mouse FcRn, His Tag, CHO

Catalog Number	LDG072PMM
Package	5 µg / 20 µg / 100 µg / Customized package

For full product information, images and publications, please visit [our website](#).



### Specifications

#### Species of Origin

Mouse

#### Affinity Tag

His Tag (C-term)

#### Purity

>95% as determined by SDS-PAGE analysis.

#### Endotoxin Level

<0.1 EU per 1 µg of the protein by the LAL method.

#### Form

Lyophilized

#### Expression System

CHO

#### Storage Buffer

Lyophilized from a 0.2 µm filtered solution of PBS, pH 7.4.

#### Molecular weight

The protein has a calculated 44.4 MW of kDa. The protein migrates as 45-60 kDa under reducing condition (SDS-PAGE analysis).

#### Mycoplasma

Not detected

### Background

#### Background

Neonatal Fc receptor (FcRn) plays a role in regulating IgG homeostasis and transporting maternal antibodies to the fetus. It is being studied for its role in autoimmune diseases and therapeutic antibody delivery.

#### Synonyms

IgG receptor FcRn large subunit p51, FcRn, IgG Fc fragment receptor transporter alpha chain, Neonatal Fc receptor

#### Tainan Headquarters

+886-6-2536677

bd@leadgene.com.tw

#### Innovation & Research Center

+886-2-27065528

#### CLD Center

+886-6-2536677

**Uniprot ID**

Q61559  
P01887

**Sequence Note**

Ser22-Ser297  
Ile21-Met119

**Instruction****Reconstitution**

It is recommended to reconstitute the lyophilized protein in sterile H<sub>2</sub>O to a concentration not less than 200 µg/mL and incubate the stock solution for at least 20 min to ensure sufficient re-dissolved.

**Stability & Storage**

This product is stable after storage at:

- -20°C for 12 months in lyophilized state from date of receipt.
- -20°C or -80°C for 1 month under sterile conditions after reconstitution.

Avoid repeated freeze/thaw cycles.

**Shipping**

The product is shipped with polar packs. Upon receipt, store it immediately at -20°C or lower for long term storage.

**Image****Tainan Headquarters**

+886-6-2536677

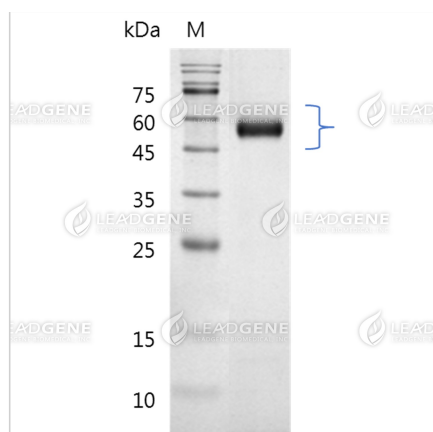
bd@leadgene.com.tw

**Innovation & Research Center**

+886-2-27065528

**CLD Center**

+886-6-2536677



SDS-PAGE analysis of recombinant mouse FcRn.

**Disclaimer :** For Research Use or Further Manufacturing Only.