

## Human FGF-6, His Tag, E. coli

<b>Catalog Number</b>	LDG072PHE
<b>Package</b>	5 µg / 20 µg / 100 µg / Customized package

For full product information, images and publications, please visit [our website](#).



### Specifications

#### Species of Origin

Human

#### Affinity Tag

His Tag (C-term)

#### Purity

>98% as determined by SDS-PAGE analysis.

#### Activity

Measure by its ability to induce 3T3 cells proliferation. The ED<sub>50</sub> for this effect is <0.1 ng/mL. The specific activity of recombinant human FGF-6 is > 1 x 10<sup>7</sup> IU/mg.

#### Form

Lyophilized

#### Expression System

Escherichia coli

#### Storage Buffer

Lyophilized from a 0.2 µm filtered solution of PBS, pH 8.0.

#### Molecular weight

The protein has a calculated MW of 19.66 kDa. The protein migrates as 19 kDa under reducing condition (SDS-PAGE analysis).

#### Endotoxin Level

<0.1 EU per 1 µg of the protein by the LAL method.

### Background

#### Tainan Headquarters

+886-6-2536677

bd@leadgene.com.tw

#### Innovation & Research Center

+886-2-27065528

#### CLD Center

+886-6-2536677

### Background

Fibroblast Growth Factors-6 (FGF-6) is a 22.9 kDa member of the fibroblast Growth Factors with 208 amino acid residues. FGF-6 is an important role in the regulation of cell proliferation, cell differentiation, angiogenesis and myogenesis. In physiological function, FGF6 is required for normal muscle regeneration.

### Uniprot ID

#P10767

### Synonyms

Heparin secretory-transforming protein 2, HST-2, HSTF-2, Heparin-binding Growth Factors 6, HBGF-6, Fibroblast Growth Factors 6

### Sequence Note

Gly41-Ile208

## Instruction

### Reconstitution

It is recommended to reconstitute the lyophilized protein in sterile H<sub>2</sub>O to a concentration of 200 µg/mL and incubate the stock solution for at least 20 min to ensure sufficient re-dissolved.

### Stability & Storage

This product is stable after storage at:

- -20°C for 12 months in lyophilized state from date of receipt.
- -20°C or -80°C for 2 weeks under sterile conditions after reconstitution.

Avoid repeated freeze/thaw cycles.

### Shipping

The product is shipped with polar packs. Upon receipt, store it immediately at -20°C or lower for long term storage.

## Image

### Tainan Headquarters

+886-6-2536677

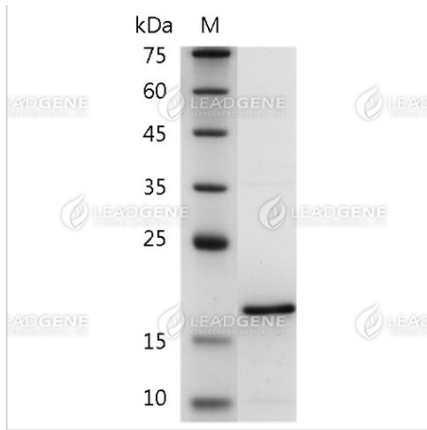
✉ [bd@leadgene.com.tw](mailto:bd@leadgene.com.tw)

### Innovation & Research Center

+886-2-27065528

### CLD Center

+886-6-2536677



SDS-PAGE analysis of recombinant human FGF-6.

**Disclaimer :** For Research Use or Further Manufacturing Only.