

Mouse IGF-II, His Tag, E. coli

Catalog Number	LDG071PME
Package	5 µg / 20 µg / 100 µg / Customized package

For full product information, images and publications, please visit [our website](#).



Specifications

Species of Origin

Mouse

Affinity Tag

His Tag (N-term)

Purity

>98% as determined by SDS-PAGE analysis.

Activity

Measure by its ability to induce MCF-7 cells proliferation. The ED₅₀ for this effect is <6 ng/mL. The specific activity of recombinant mouse IGF-II is > 1.5 x 10⁵ IU/mg.

Form

Lyophilized

Expression System

Escherichia coli

Storage Buffer

Lyophilized from a 0.2 µm filtered solution of PBS, pH 8.0.

Molecular weight

The protein has a calculated MW of 8.20 kDa. The protein migrates about 11 kDa under reducing condition (SDS-PAGE analysis).

Endotoxin Level

<0.1 EU per 1 µg of the protein by the LAL method.

Background

Tainan Headquarters

+886-6-2536677

bd@leadgene.com.tw

Innovation & Research Center

+886-2-27065528

CLD Center

+886-6-2536677

Background

Mouse Insulin Like Growth Factors 2 (IGF-II) is a 7.34 kDa member of the Insulin-like Growth Factors with 67 amino acid residues. IGF-II is mainly expressed from early embryonic somatic tissues, liver, and epithelial cells lining the surface of the brain. IGF-II is mediating the embryonic development and placental growth, while also promoting tumor growth. IGF-II affects regulation of cell proliferation, growth, migration, differentiation and survival via binding to IGF-I receptor.

Uniprot ID

#P09535

Synonyms

Insulin-like Growth Factors II, IGF-II, Multiplication-stimulating polypeptide

Sequence Note

Ala25-Glu91

Instruction

Reconstitution

It is recommended to reconstitute the lyophilized protein in sterile H₂O to a concentration of 200 µg/mL and incubate the stock solution for at least 20 min to ensure sufficient re-dissolved.

Stability & Storage

This product is stable after storage at:

- -20°C for 12 months in lyophilized state from date of receipt.
- -20°C or -80°C for 2 weeks under sterile conditions after reconstitution.

Avoid repeated freeze/thaw cycles.

Shipping

The product is shipped with polar packs. Upon receipt, store it immediately at -20°C or lower for long term storage.

Image

Tainan Headquarters

+886-6-2536677

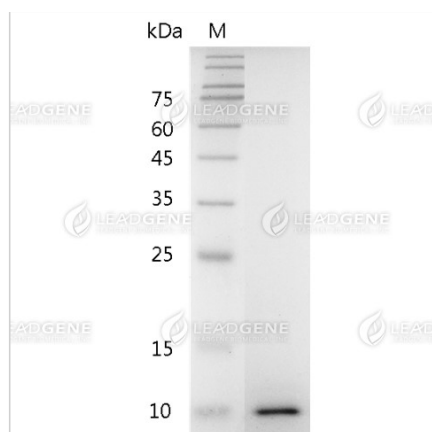
✉ bd@leadgene.com.tw

Innovation & Research Center

+886-2-27065528

CLD Center

+886-6-2536677



SDS-PAGE analysis of recombinant mouse IGF-II.

Disclaimer : For Research Use or Further Manufacturing Only.